

# CSRS-PPP 2.31.0 (2019-11-04)



raw\_202004060616.obs

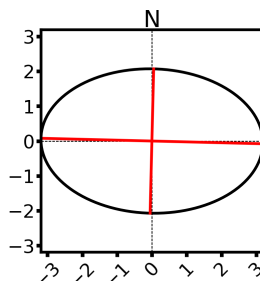
<b>Data Start</b>	<b>Data End</b>	<b>Duration of Observations</b>
2020-04-06 06:17:06.00	2020-04-06 07:39:08.20	1:22:02.200
<b>Processing Time</b>		<b>Product Type</b>
14:06:26 UTC 2020/04/06		NRCan Ultra-rapid
<b>Observations</b>	<b>Frequency</b>	<b>Mode</b>
Phase and Code	Single	Static
<b>Elevation Cut-Off</b>	<b>Rejected Epochs</b>	<b>Estimation Steps</b>
7.5 degrees	0.00 %	0.20 sec
<b>Antenna Model</b>	<b>APC to ARP</b>	<b>ARP to Marker</b>
Unknown	Unknown	H:0.000m / E:0.000m / N:0.000m

(APC = antenna phase center; ARP = antenna reference point)

## Estimated Position for raw\_202004060616.obs

	Latitude (+n)	Longitude (+e)	Ell. Height
<b>ITRF14 (2020.2)</b>	52° 15' 0.98797"	20° 52' 39.86043"	143.283 m
<b>Sigmas(95%)</b>	1.658 m	2.553 m	2.949 m
<b>A priori*</b>	52° 15' 1.16723"	20° 52' 39.63162"	135.639 m
<b>Estimated – A priori</b>	-5.541 m	4.341 m	7.644 m

**95% Error Ellipse (m)**  
 semi-major: 3.189 m  
 semi-minor: 2.070 m  
 semi-major azimuth: -88° 24' 58.72"

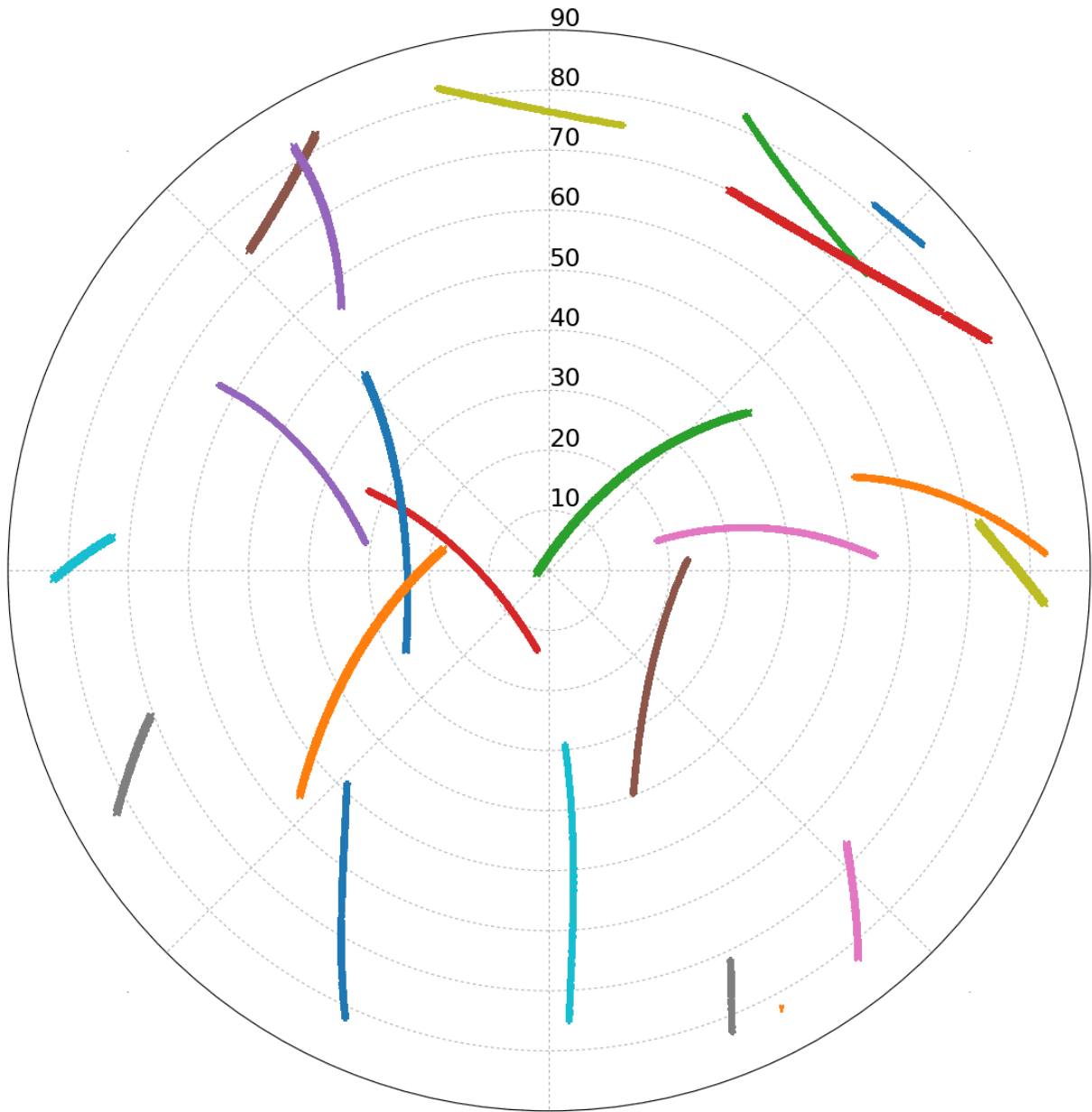


**UTM (North)  
Zone 34**

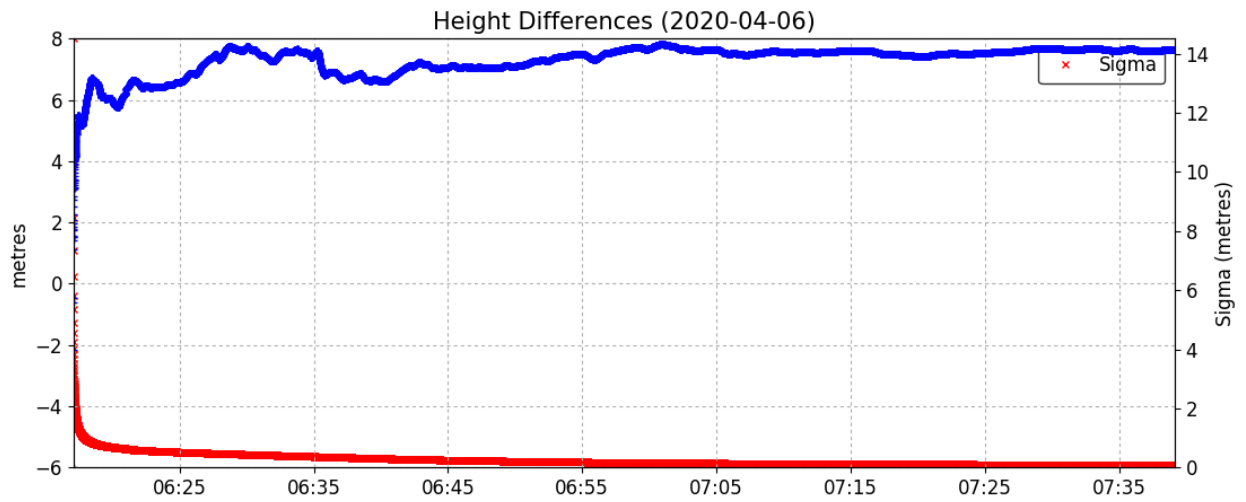
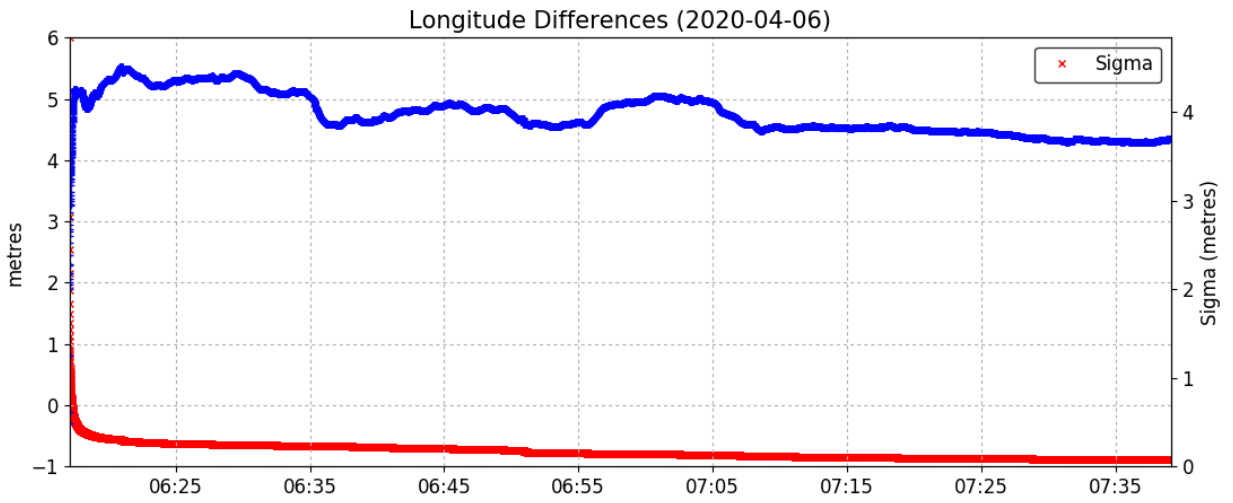
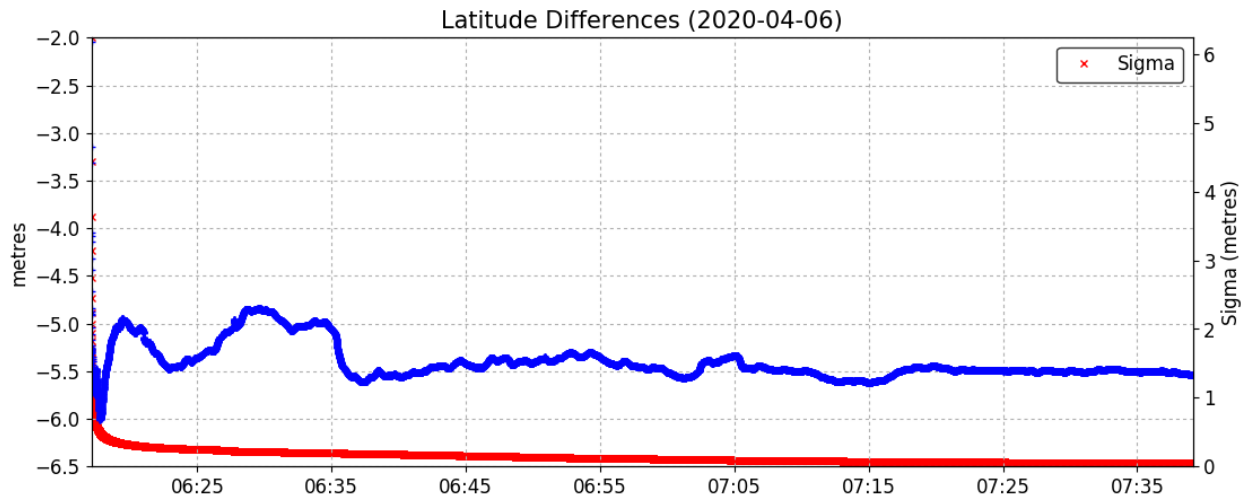
5788882.083 m (N)  
 491653.605 m (E)  
 Scale Factors  
 0.99960086 (point)  
 0.99957842 (combined)

\*(Coordinates from RINEX header used as a priori position)

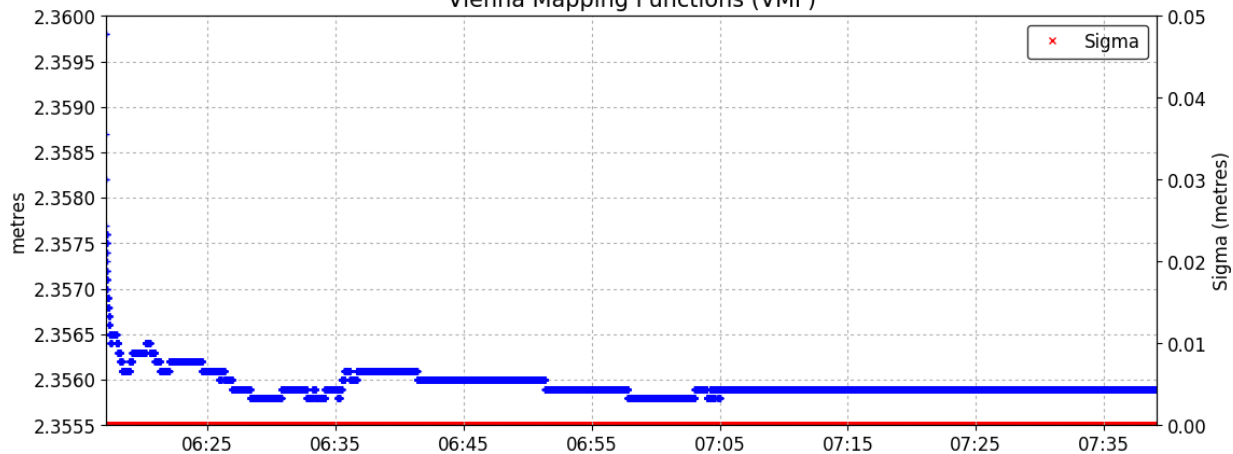
# Satellite Sky Distribution



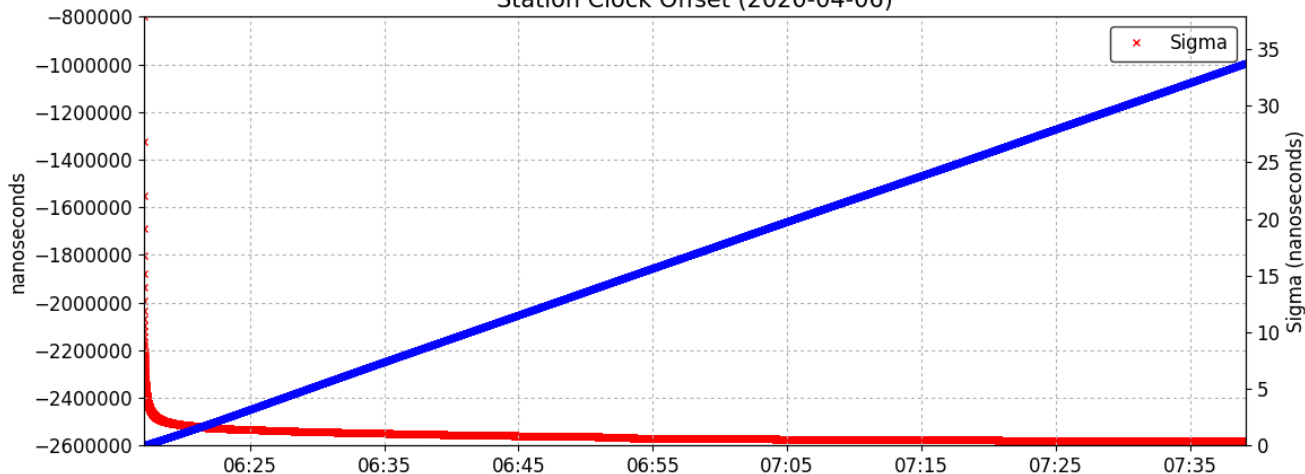
+	G05	+	G13	×	G20	+	R01	×	R11	+	R19
+	G07	+	G15	×	G24	×	R02	×	R12	×	R20
+	G08	×	G17	+	G28	×	R03	×	R13	×	R21
+	G11	+	G19	+	G30	+	R08				



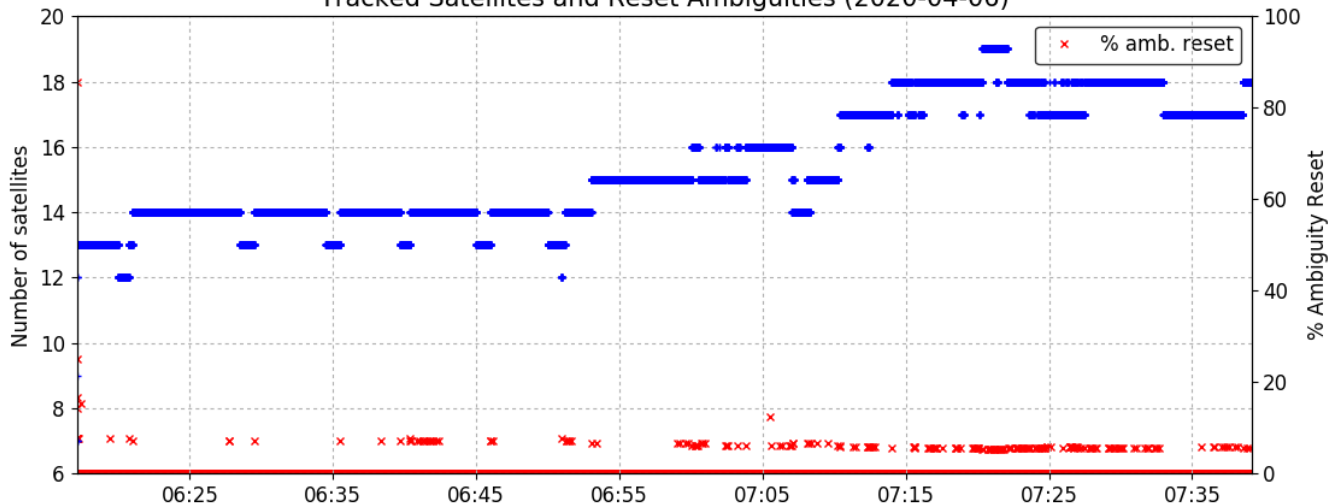
Modelled Tropospheric Zenith Delay (2020-04-06)  
Vienna Mapping Functions (VMF)



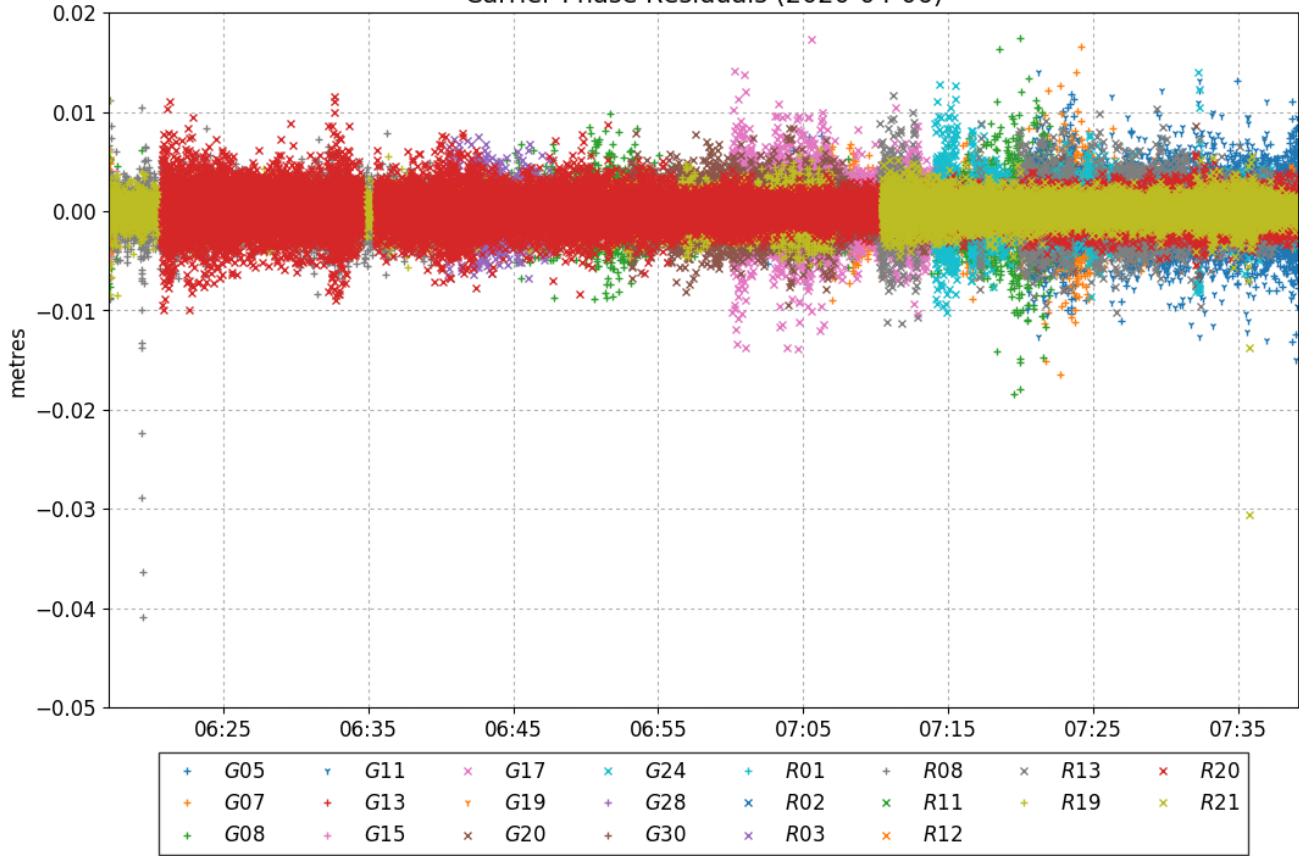
Station Clock Offset (2020-04-06)



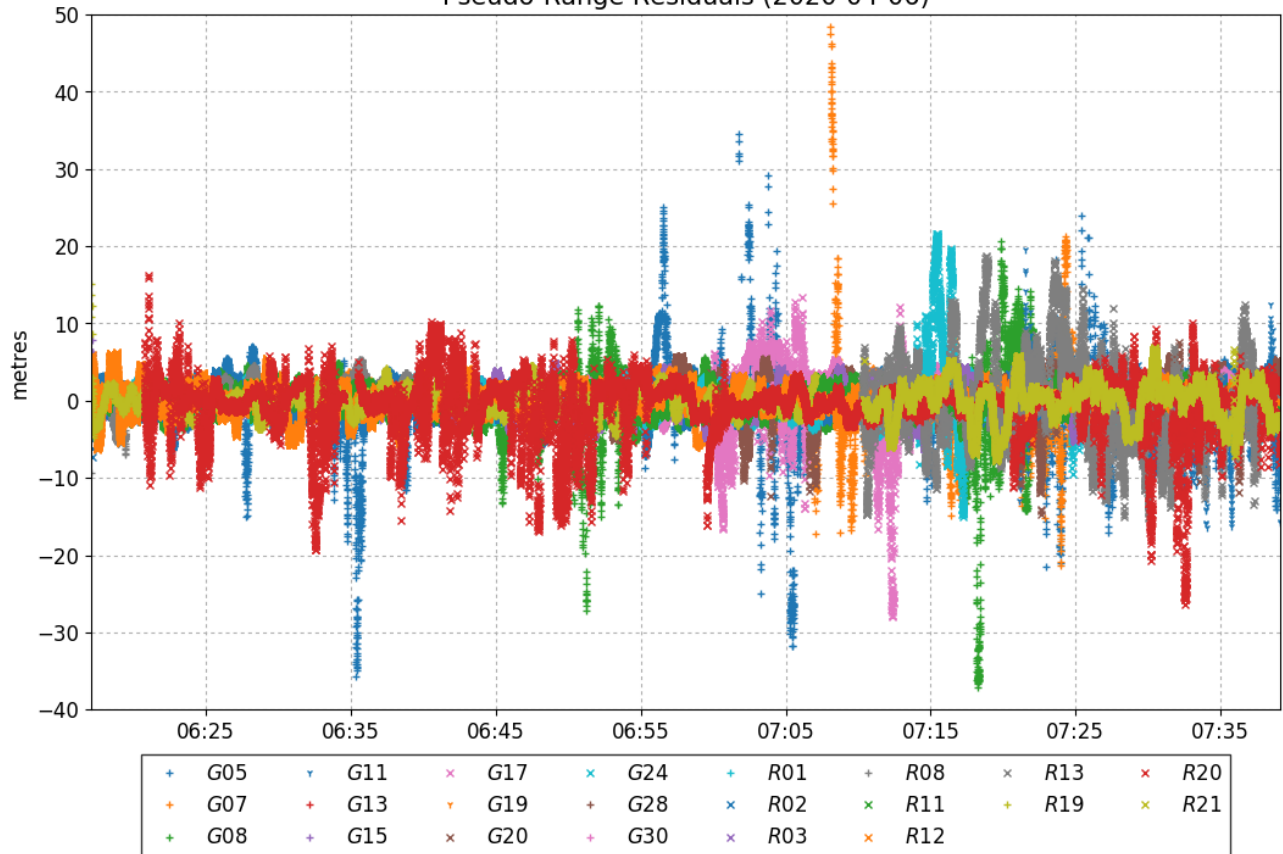
Tracked Satellites and Reset Ambiguities (2020-04-06)



Carrier-Phase Residuals (2020-04-06)



Pseudo-Range Residuals (2020-04-06)



**~~~ Disclaimer ~~~**

**Natural Resources Canada does not assume any liability deemed to have been caused directly or indirectly by any content of its CSRS-PPP online positioning service.**

**If you have any questions, please feel free to contact:**

**Geodetic Integrated Services  
Canadian Geodetic Survey  
Surveyor General Branch  
Natural Resources Canada  
Government of Canada  
588 Booth Street, Room 334  
Ottawa, Ontario K1A 0Y7  
Phone: 343-292-6617**

**Email: [nrcan.geodeticinformation-informationgeodesique.rncan@canada.ca](mailto:nrcan.geodeticinformation-informationgeodesique.rncan@canada.ca)**



**Natural Resources  
Canada**

**Ressources naturelles  
Canada**

**Canada**