

# CSRS-PPP 2.26.1 (2019-05-31)



raw\_201911221528\_Base.obs

<b>Data Start</b>	<b>Data End</b>	<b>Duration of Observations</b>
2019-11-22 15:28:57.00	2019-11-22 19:48:59.80	4:20:02.800
<b>Processing Time</b>		<b>Product Type</b>
21:59:54 UTC 2019/11/28		NRCan Rapid
<b>Observations</b>	<b>Frequency</b>	<b>Mode</b>
Phase and Code	Double	Static
<b>Elevation Cut-Off</b>	<b>Rejected Epochs</b>	<b>Estimation Steps</b>
7.5 degrees	0.00 %	0.20 sec
<b>Antenna Model</b>	<b>APC to ARP</b>	<b>ARP to Marker</b>
Unknown	Unknown	H:0.000m / E:0.000m / N:0.000m

(APC = antenna phase center; ARP = antenna reference point)

## Estimated Position for raw\_201911221528\_Base.obs

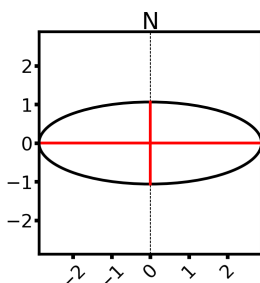
	<b>Latitude (+n)</b>	<b>Longitude (+e)</b>	<b>Ell. Height</b>
<b>ITRF14 (2019.9)</b>	10° 12' 33.43670"	-61° 16' 26.30939"	-3.933 m
<b>Sigmas(95%)</b>	0.009 m	0.023 m	0.042 m
<b>A priori*</b>	10° 12' 33.45950"	-61° 16' 26.31984"	9.513 m
<b>Estimated – A priori</b>	-0.701 m	0.318 m	-13.446 m

### 95% Error Ellipse (cm)

semi-major: 2.9 cm

semi-minor: 1.1 cm

semi-major azimuth: 89° 59' 58.63"



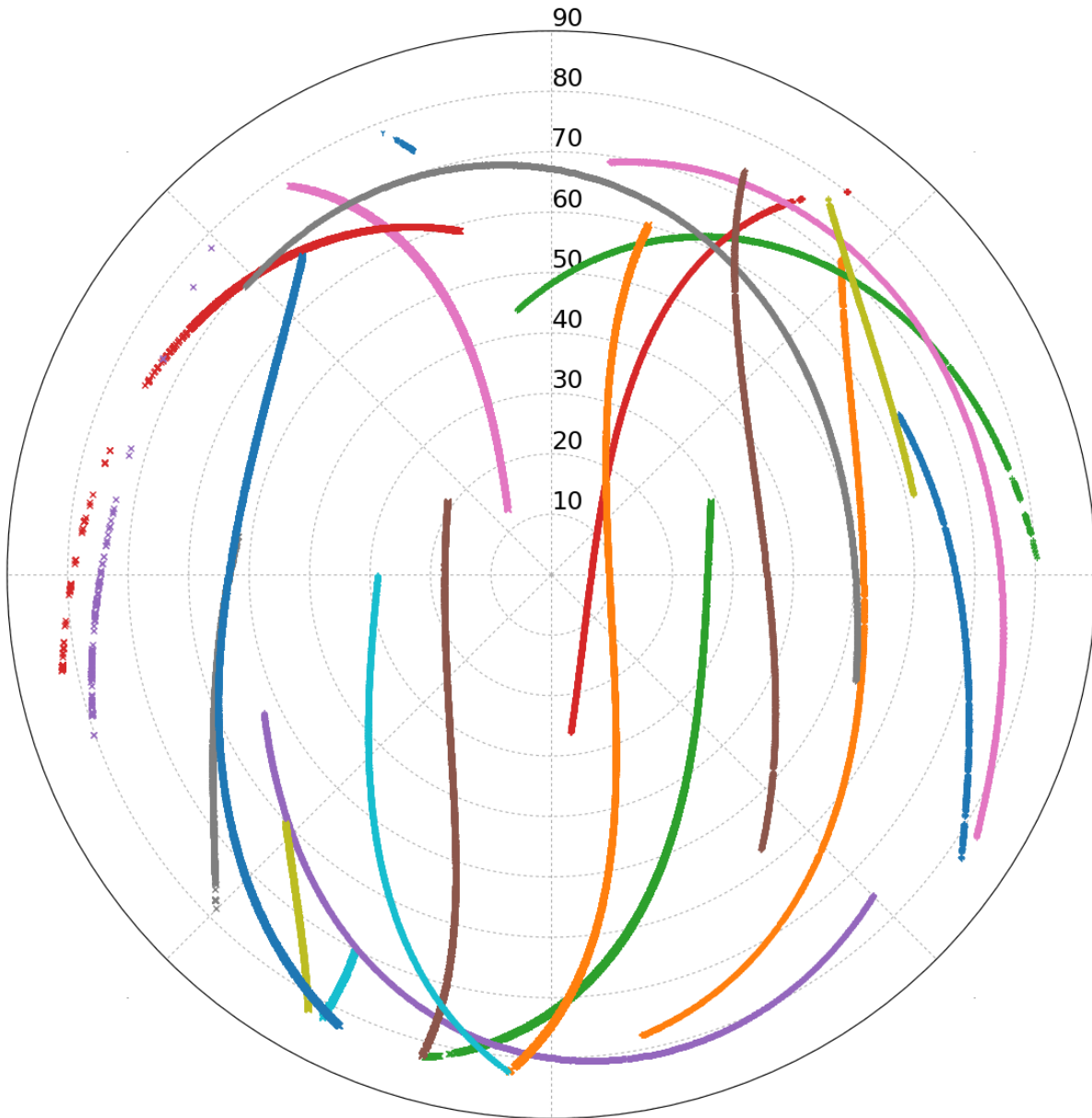
### UTM (North) Zone 20

1129057.130 m (N)  
689069.288 m (E)

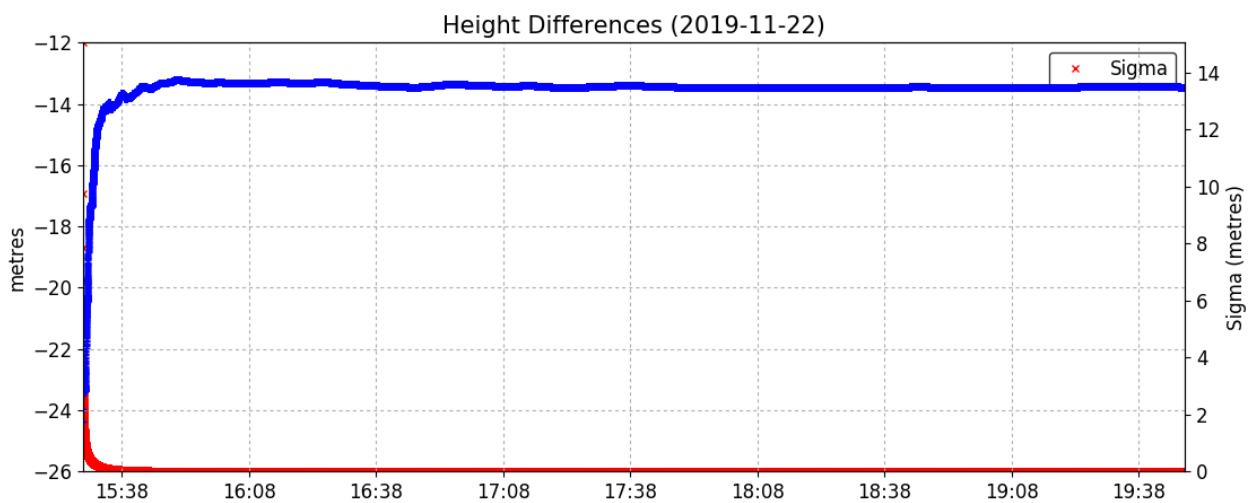
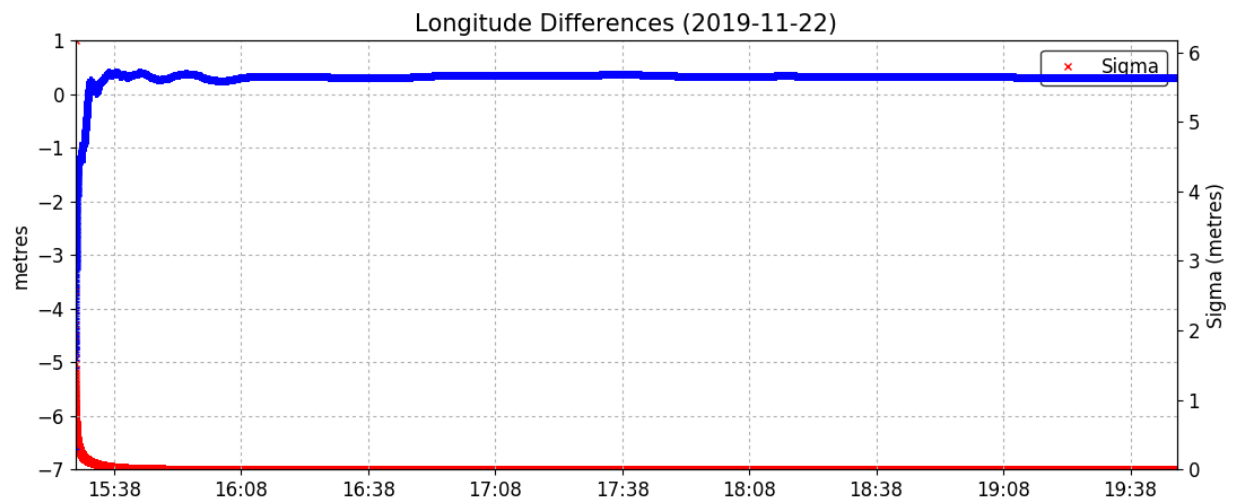
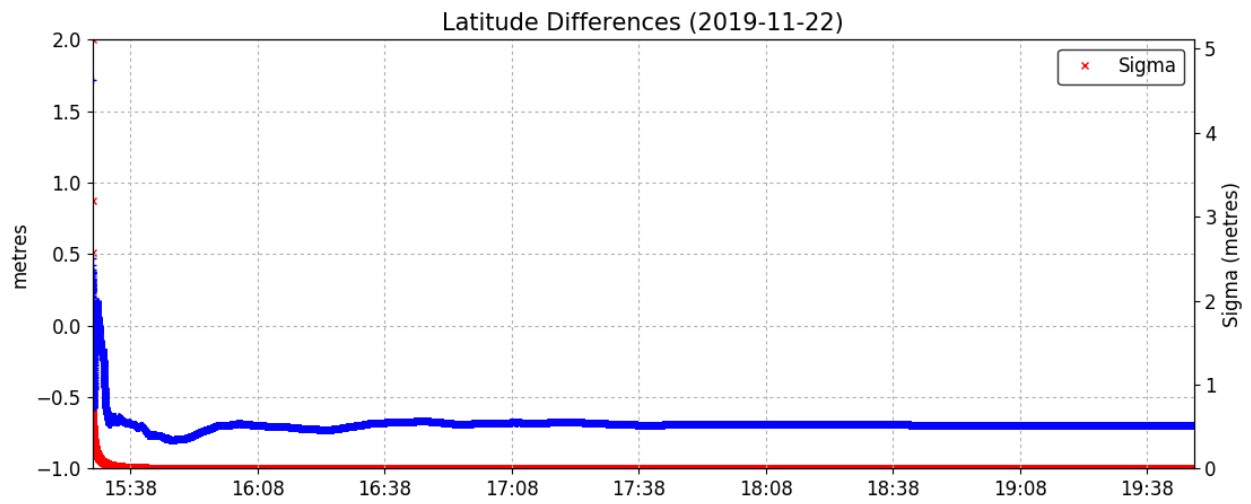
Scale Factors  
1.000042 (point)  
1.000043 (combined)

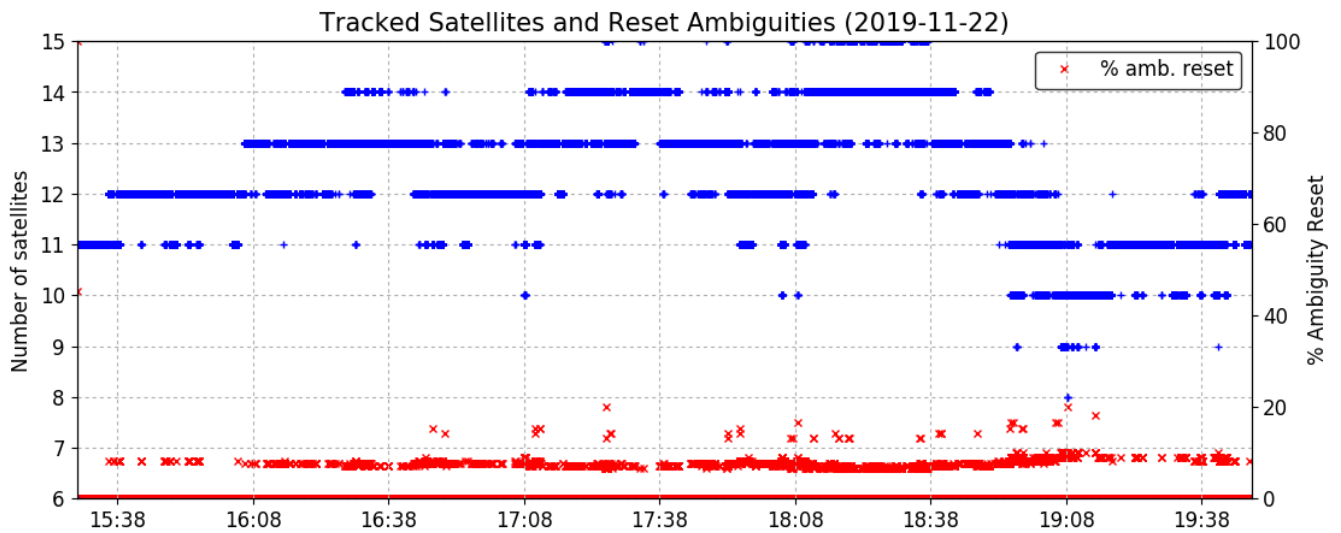
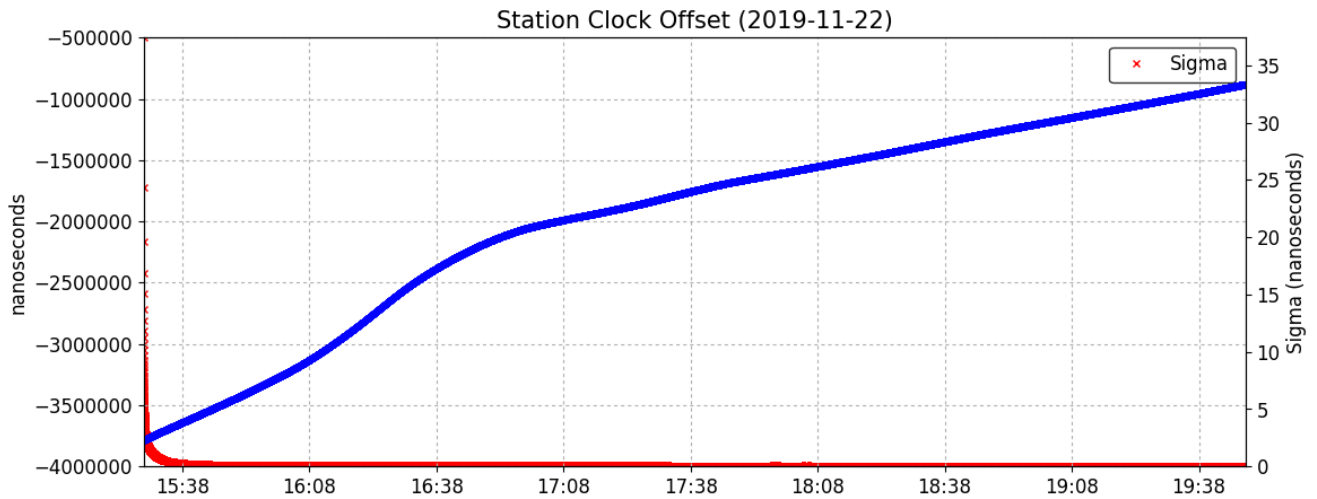
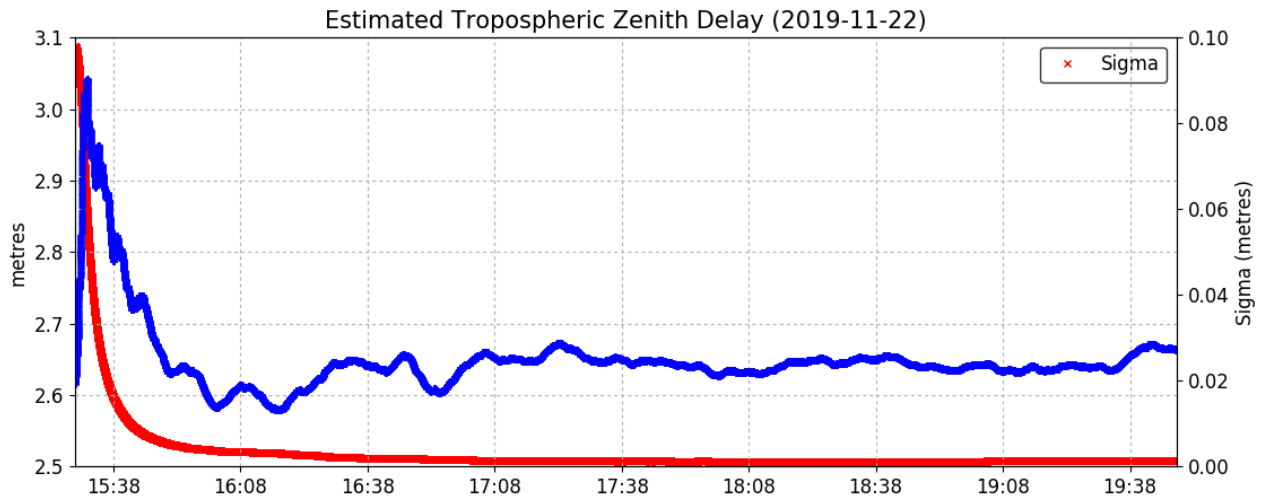
\*(Coordinates from RINEX header used as a priori position)

Satellite Sky Distribution  
 Note: The sampling interval of this plot is 4.0 sec

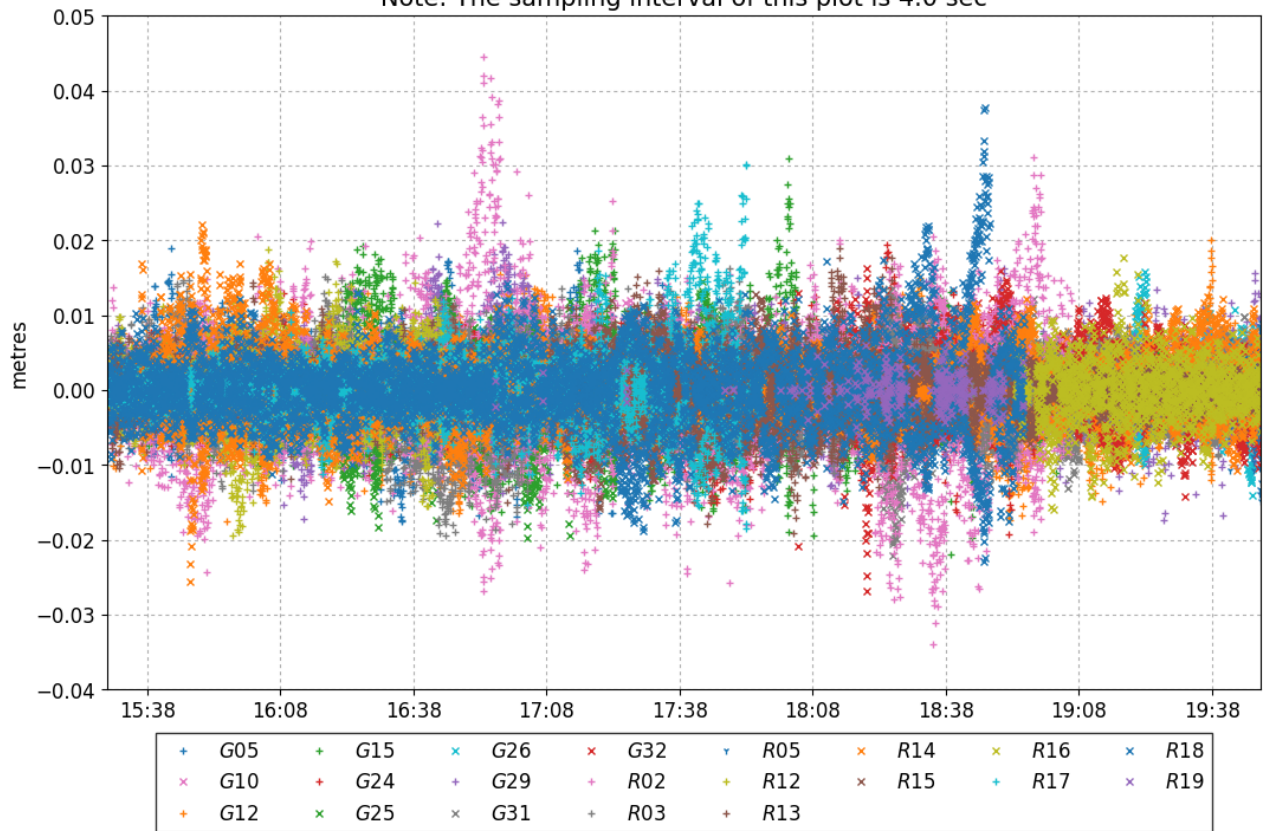


+	G05	+	G24	×	G31	↓	R05	×	R14	+	R17
×	G10	×	G25	×	G32	+	R12	×	R15	×	R18
+	G12	×	G26	+	R02	+	R13	×	R16	×	R19
+	G15	+	G29	+	R03						

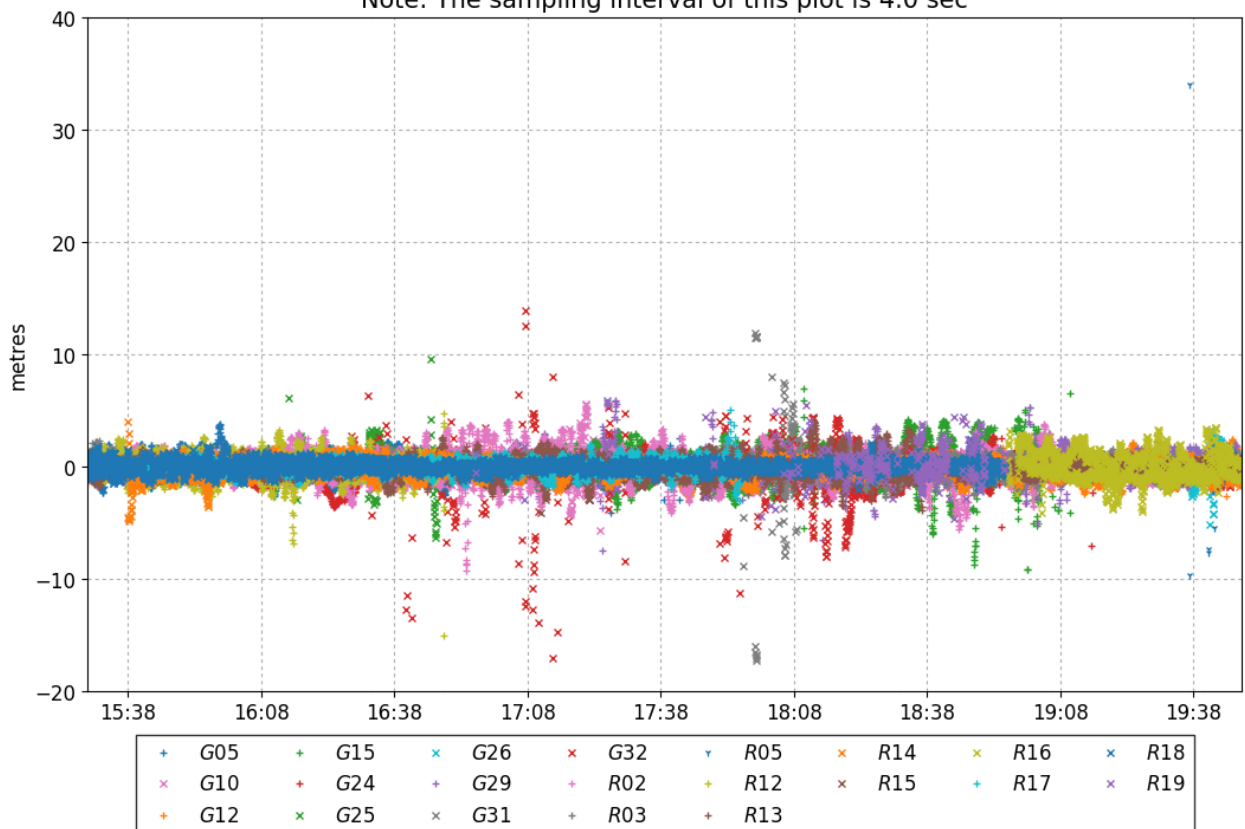




Carrier-Phase Residuals (2019-11-22)  
Note: The sampling interval of this plot is 4.0 sec



Pseudo-Range Residuals (2019-11-22)  
Note: The sampling interval of this plot is 4.0 sec



**~~~ Disclaimer ~~~**

**Natural Resources Canada does not assume any liability deemed to have been caused directly or indirectly by any content of its CSRS-PPP online positioning service.**

**If you have any questions, please feel free to contact:**

**Geodetic Integrated Services  
Canadian Geodetic Survey  
Surveyor General Branch  
Natural Resources Canada  
Government of Canada  
588 Booth Street, Room 334  
Ottawa, Ontario K1A 0Y7  
Phone: 343-292-6617**

**Email: [nrcan.geodeticinformation-informationgeodesique.rncan@canada.ca](mailto:nrcan.geodeticinformation-informationgeodesique.rncan@canada.ca)**



**Natural Resources  
Canada**

**Ressources naturelles  
Canada**

**Canada**