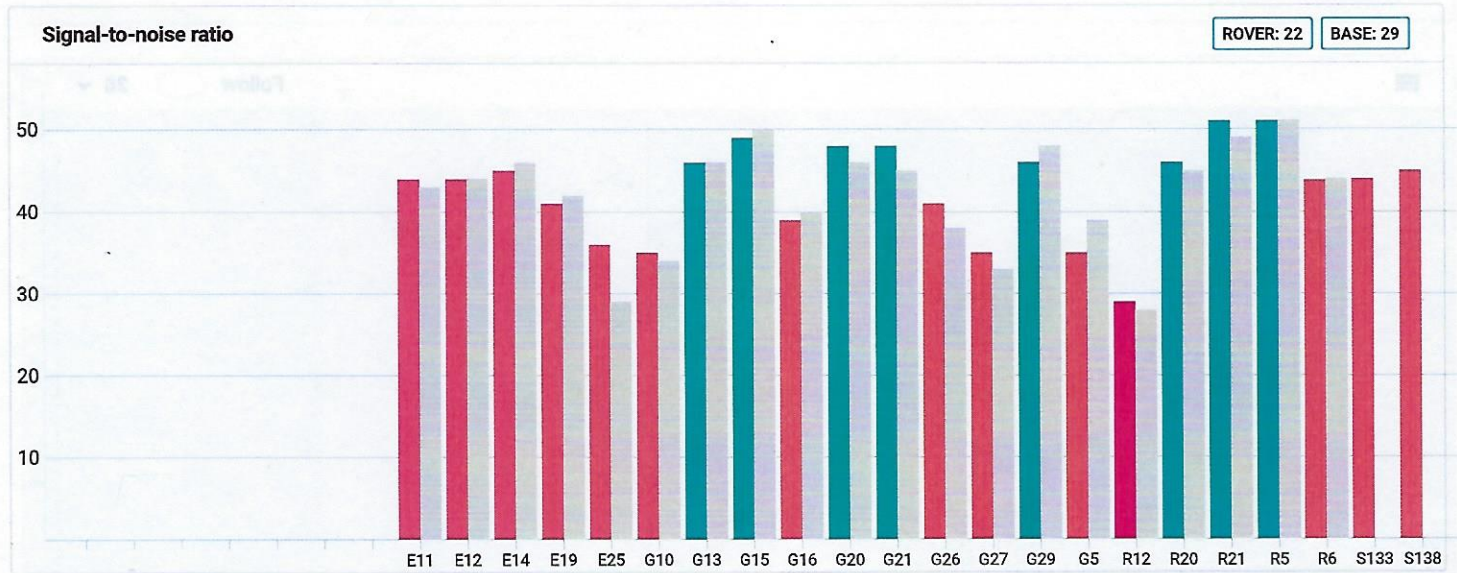


Status



RTK parameters

4.8 sec ● age of differential	0.0 ● AR validation ratio	0.29 m ● baseline
---	-------------------------------------	-----------------------------

Positioning mode

Kinematic

Solution status

Fix

Position LLH ▾

52.3530299258°
± 0.0083 m
latitude

-113.139154029°
± 0.0054 m
longitude

820.799172335 m
± 0.0176 m
height

Velocity

0.0021 m/s East	0.0024 m/s North	-0.0052 m/s Up
---------------------------	----------------------------	--------------------------

Base position LLH ▾

52.3530314127°