

# CSRS-PPP 3.54.2 (2022-11-10)



CliffordPre\_raw\_20240215130738.240  
CLIPRESHOP

<b>Data Start</b>	<b>Data End</b>	<b>Duration of Observations</b>	
2024-02-15 13:08:00.00	2024-02-16 13:07:30.00	23:59:30	
<b>Processing Time</b>		<b>Product Type</b>	
15:31:45 UTC 2024/02/16		NRCan Ultra-rapid	
<b>Observations</b>	<b>Frequency</b>	<b>Mode</b>	
Phase and Code	Double	Static	
<b>Elevation Cut-Off</b>	<b>Rejected Epochs</b>	<b>Fixed Ambiguities</b>	<b>Estimation Steps</b>
7.5 degrees	0.52 %	19.48 %	30.00 sec
<b>Antenna Model</b>	<b>APC to ARP</b>	<b>ARP to Marker</b>	
EML_REACH_RS2 NONE	L1 = 0.135 m L2 = 0.137 m	H:0.000m / E:0.000m / N:0.000m	

(APC = antenna phase center; ARP = antenna reference point)

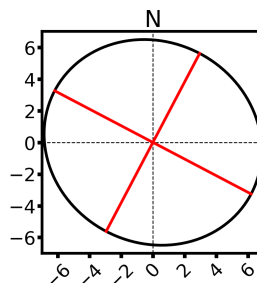
## Estimated Position for CliffordPre\_raw\_20240215130738.240

	Latitude (+n)	Longitude (+e)	Ell. Height
<b>ITRF20 (2024.1)</b>	43° 59' 23.37748"	-80° 56' 55.90594"	333.288 m
<b>Sigmas(95%)</b>	0.005 m	0.005 m	0.019 m
<b>A priori*</b>	43° 59' 23.44572"	-80° 56' 55.94714"	339.374 m
<b>Estimated – A priori</b>	-2.106 m	0.918 m	-6.085 m

**Orthometric Height**  
CGVD2013  
(CGG2013a)  
(2024.1)

369.368 m  
(click for height reference information)

**95% Error Ellipse (mm)**  
semi-major: 7 mm  
semi-minor: 6 mm  
semi-major azimuth: -62° 42' 30.24"

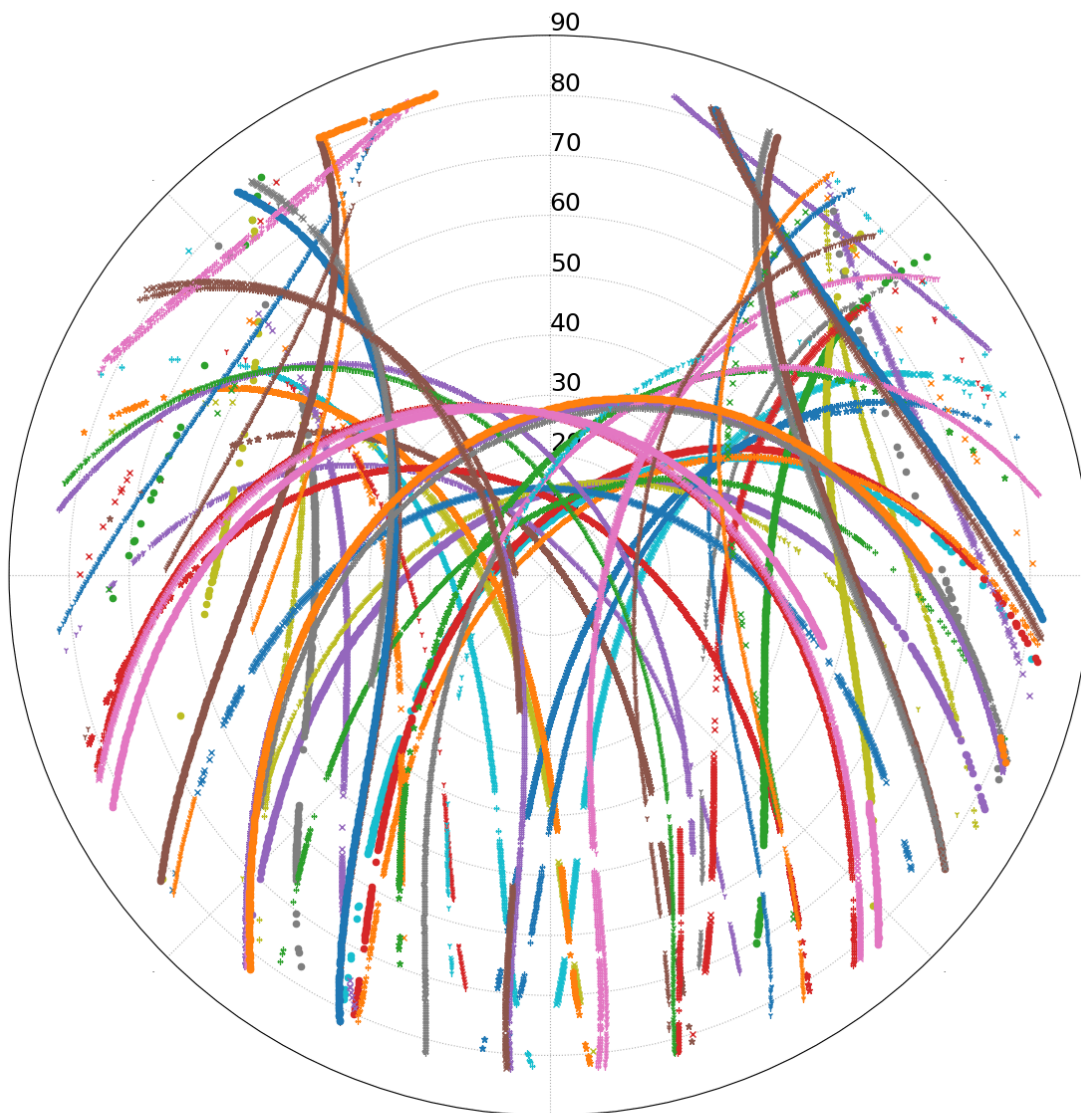


**UTM (North)**  
Zone 17

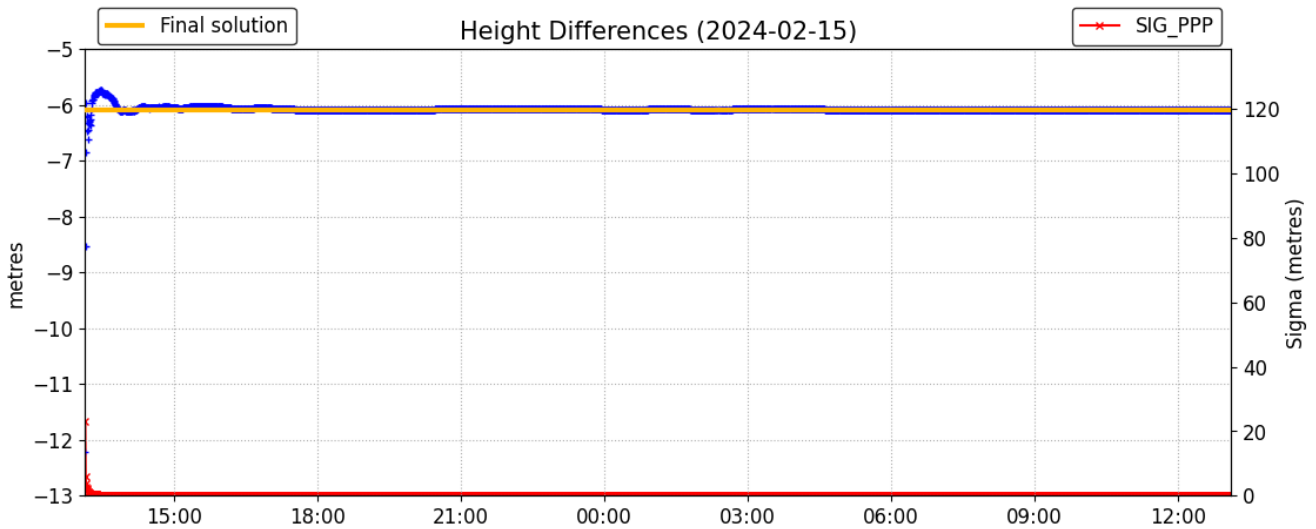
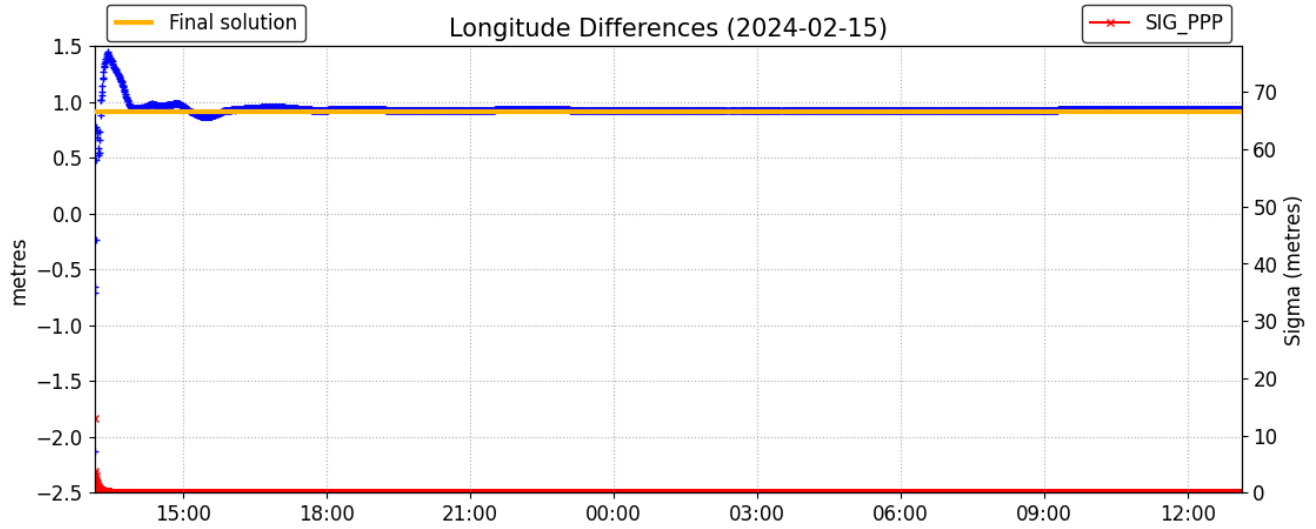
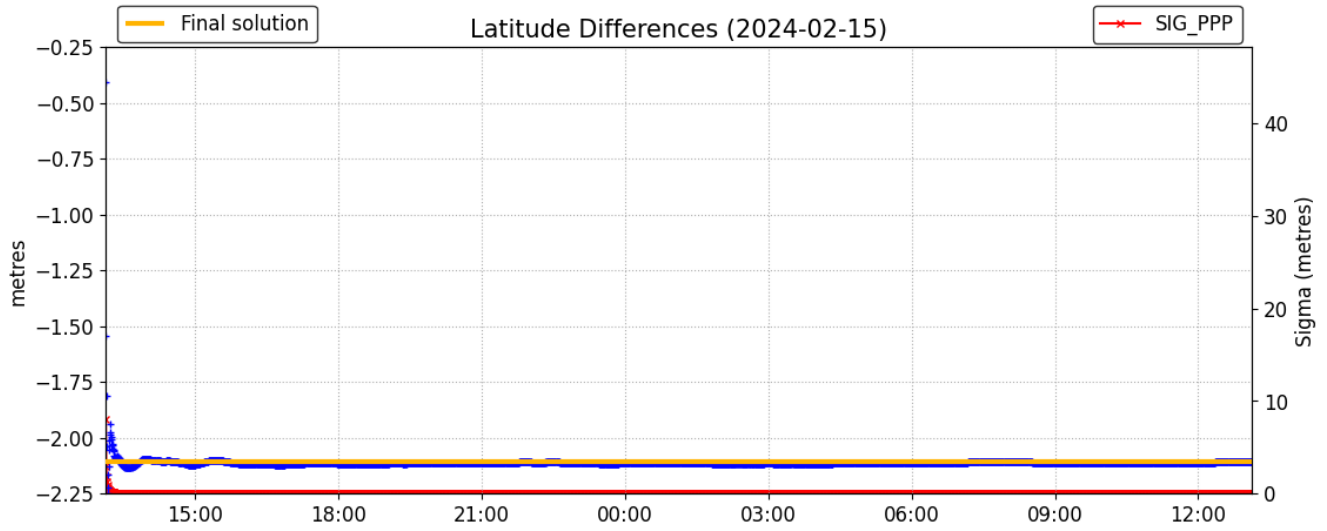
4870744.229 m (N)  
504100.583 m (E)  
  
Scale Factors  
0.99960021 (point)  
0.99954797 (combined)

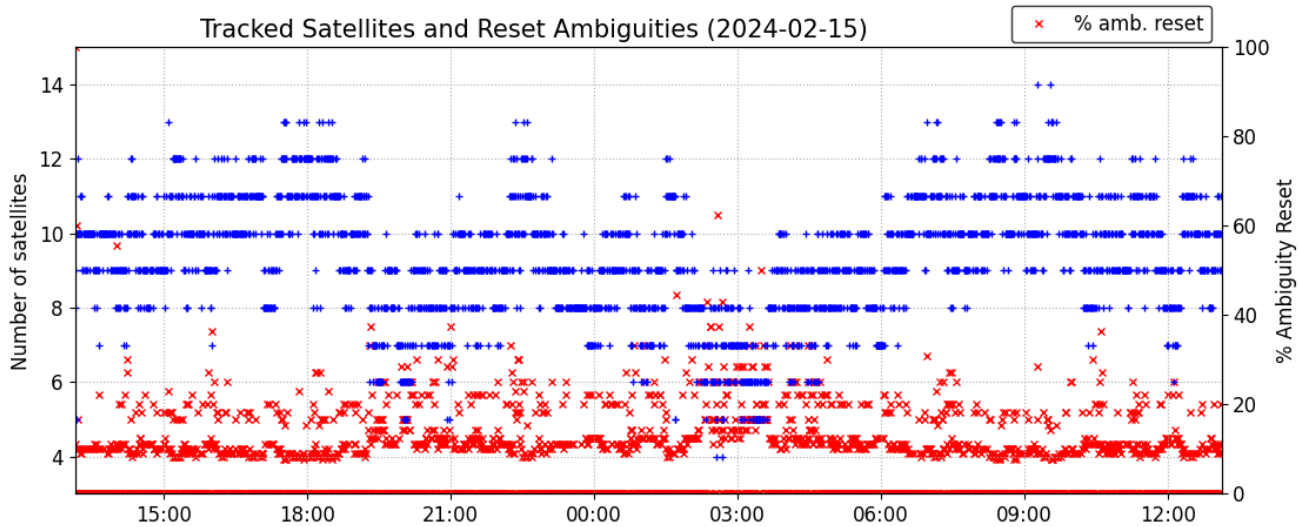
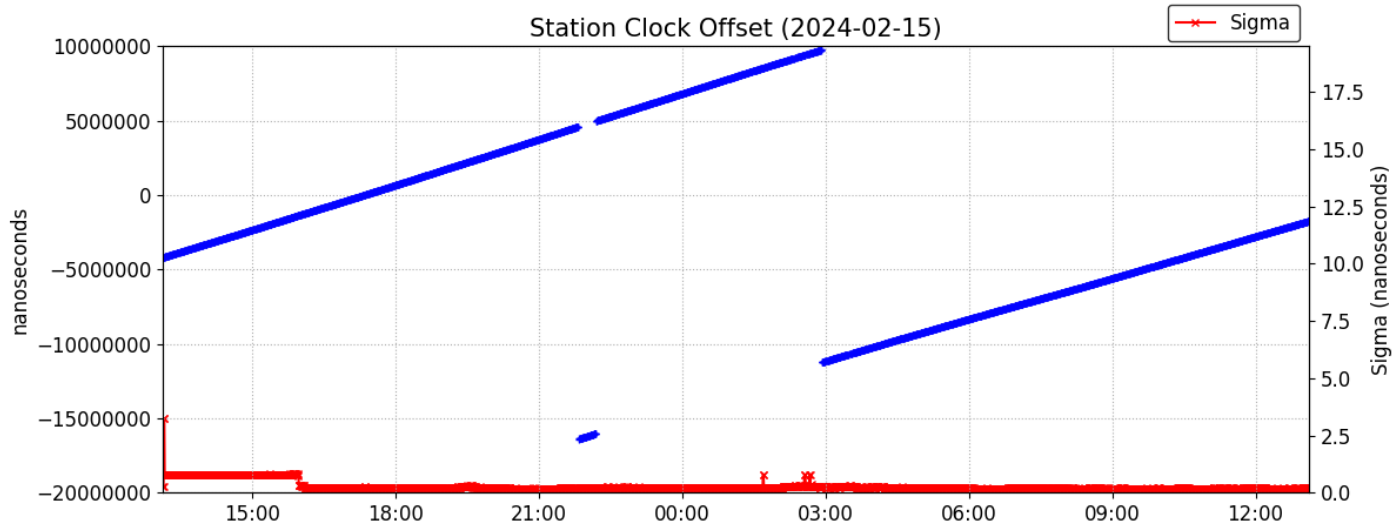
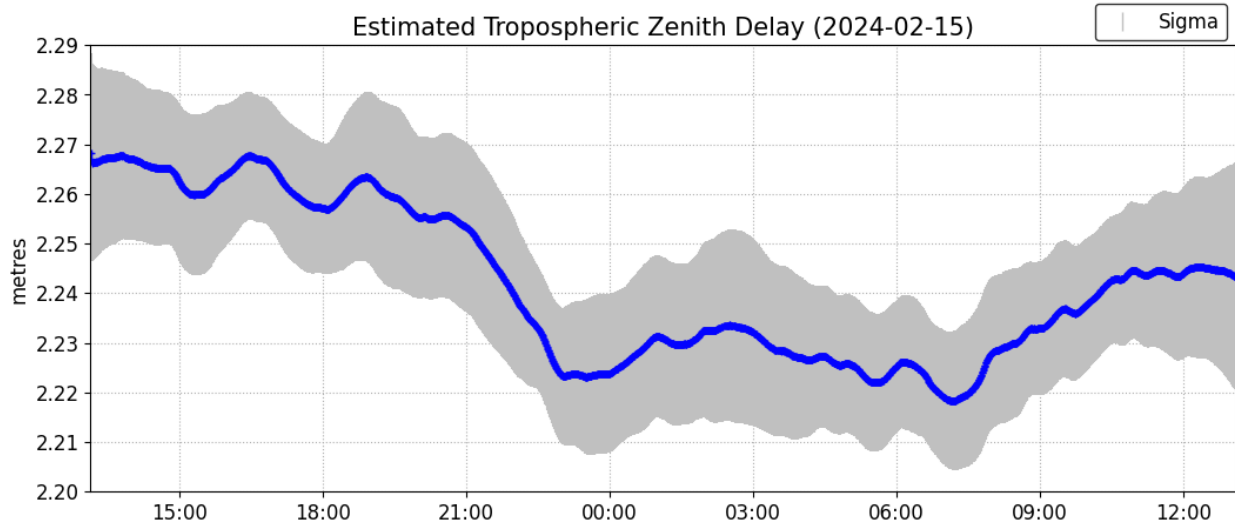
\*(Coordinates from RINEX header used as a priori position)

### Satellite Sky Distribution

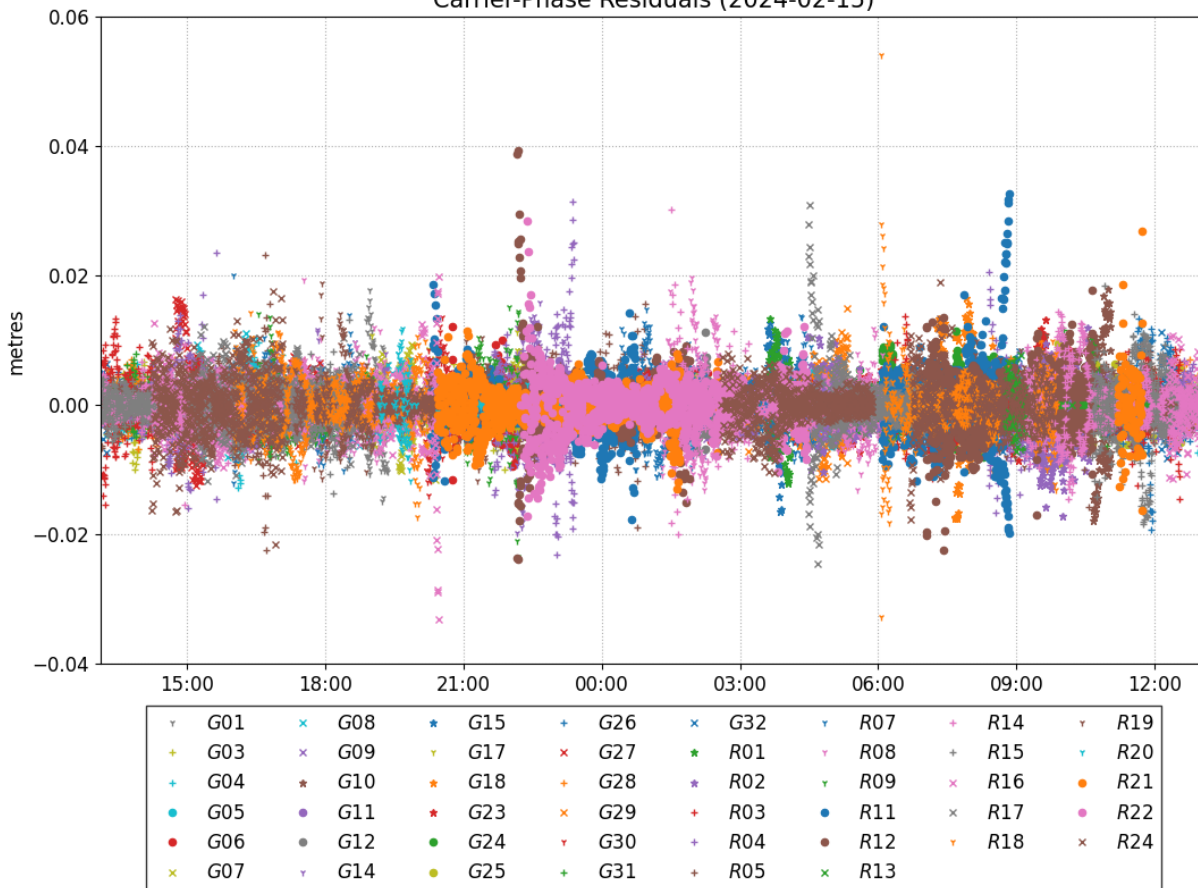


▽	G01	*	G10	●	G24	×	G32	▽	R09	×	R17
+	G03	●	G11	●	G25	*	R01	●	R11	▽	R18
+	G04	●	G12	+	G26	*	R02	●	R12	▽	R19
●	G05	▽	G14	×	G27	+	R03	×	R13	▽	R20
●	G06	+	G15	+	G28	+	R04	+	R14	●	R21
×	G07	+	G17	×	G29	+	R05	+	R15	+	R22
×	G08	+	G18	▽	G30	▽	R07	×	R16	×	R24
×	G09	*	G23	+	G31	▽	R08				

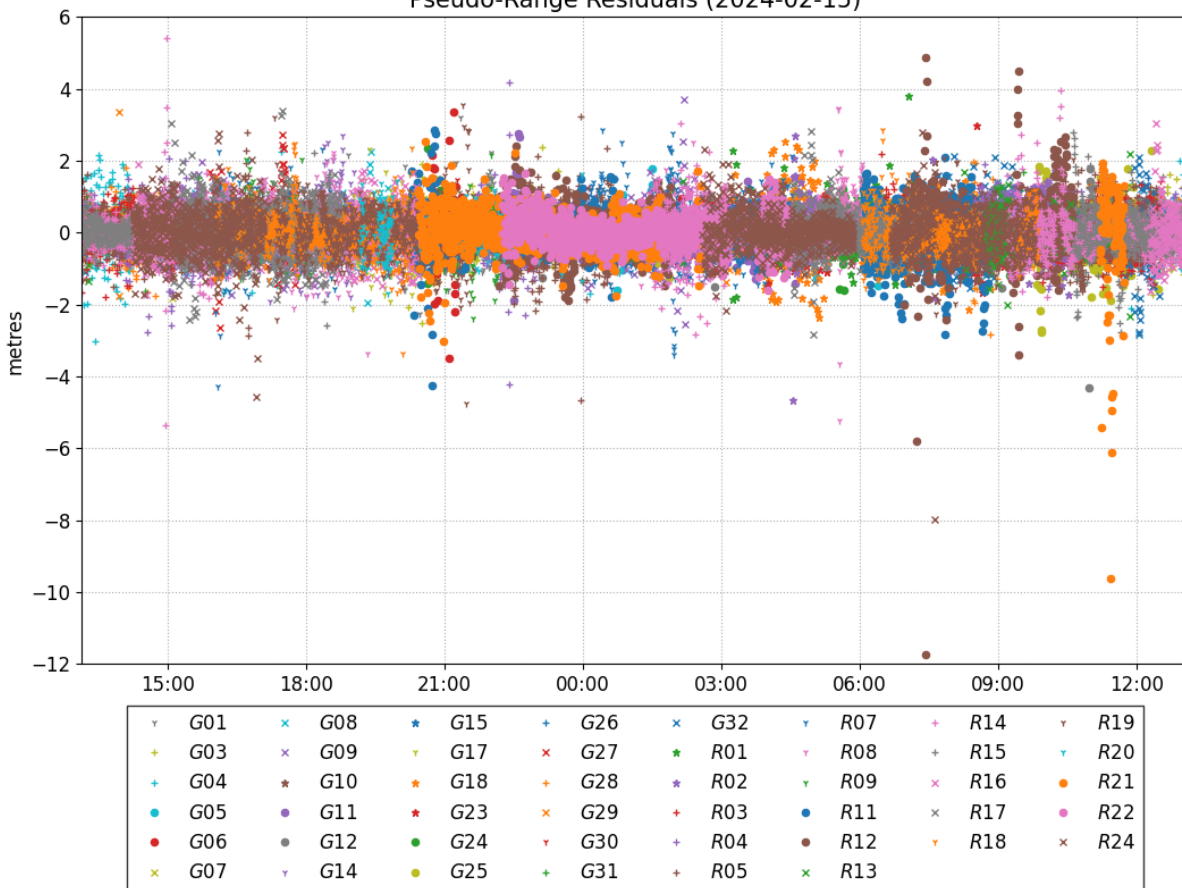




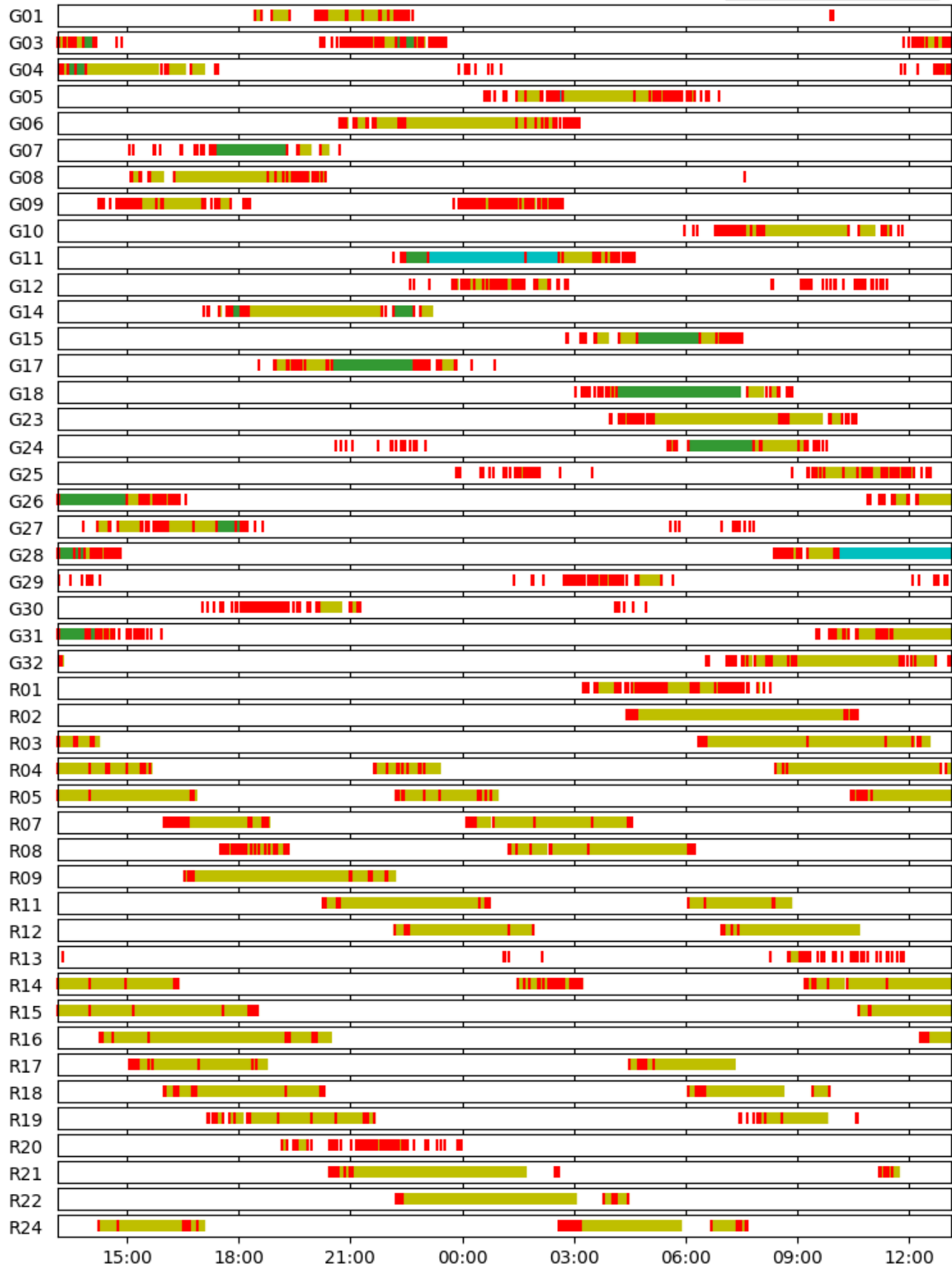
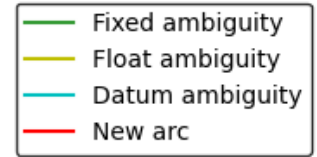
Carrier-Phase Residuals (2024-02-15)



Pseudo-Range Residuals (2024-02-15)



# Phase Ambiguity Status (2024-02-15)



**~~~ Disclaimer ~~~**

**Natural Resources Canada does not assume any liability deemed to have been caused directly or indirectly by any content of its CSRS-PPP online positioning service.**

**Use of Canadian Geodetic Survey products and data is subject to the  
Open Government Licence - Canada**

**If you have any questions, please feel free to contact:**

**Canadian Geodetic Survey**

**Natural Resources Canada**

**Ottawa, Ontario, Canada**

**Email: [geodeticinformation-informationgeodesique@nrcan-rncan.gc.ca](mailto:geodeticinformation-informationgeodesique@nrcan-rncan.gc.ca)**



**Natural Resources  
Canada**

**Ressources naturelles  
Canada**

**Canada**