

CSRS-PPP 2.18.0 (2018-10-09)



ik2813200.180
ik281

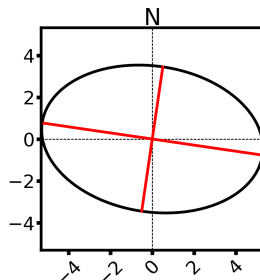
Data Start	Data End	Duration of Observations
2018-11-16 09:43:50.20	2018-11-16 12:45:42.60	3:01:52.400
Processing Time		Product Type
10:21:03 UTC 2018/12/03		IGS Final
Observations	Frequency	Mode
Phase and Code	Single	Static
Elevation Cut-Off	Rejected Epochs	Estimation Steps
7.5 degrees	34.40 %	0.20 sec
Antenna Model	APC to ARP	ARP to Marker
IL1	Unknown	H:0.000m / E:0.000m / N:2.065m

(APC = antenna phase center; ARP = antenna reference point)

Estimated Position for ik2813200.180

	Latitude (+n)	Longitude (+e)	Ell. Height
ITRF14 (2018)	50° 10' 14.52129"	-5° 7' 24.33076"	133.330 m
Sigmas(95%)	2.898 m	4.186 m	5.033 m
A priori*	50° 10' 14.27141"	-5° 7' 20.41160"	206.550 m
Estimated – A priori	7.721 m	-77.775 m	-73.220 m

95% Error Ellipse (m)
 semi-major: 5.316 m
 semi-minor: 3.487 m
 semi-major azimuth: 98° 18' 36.13"



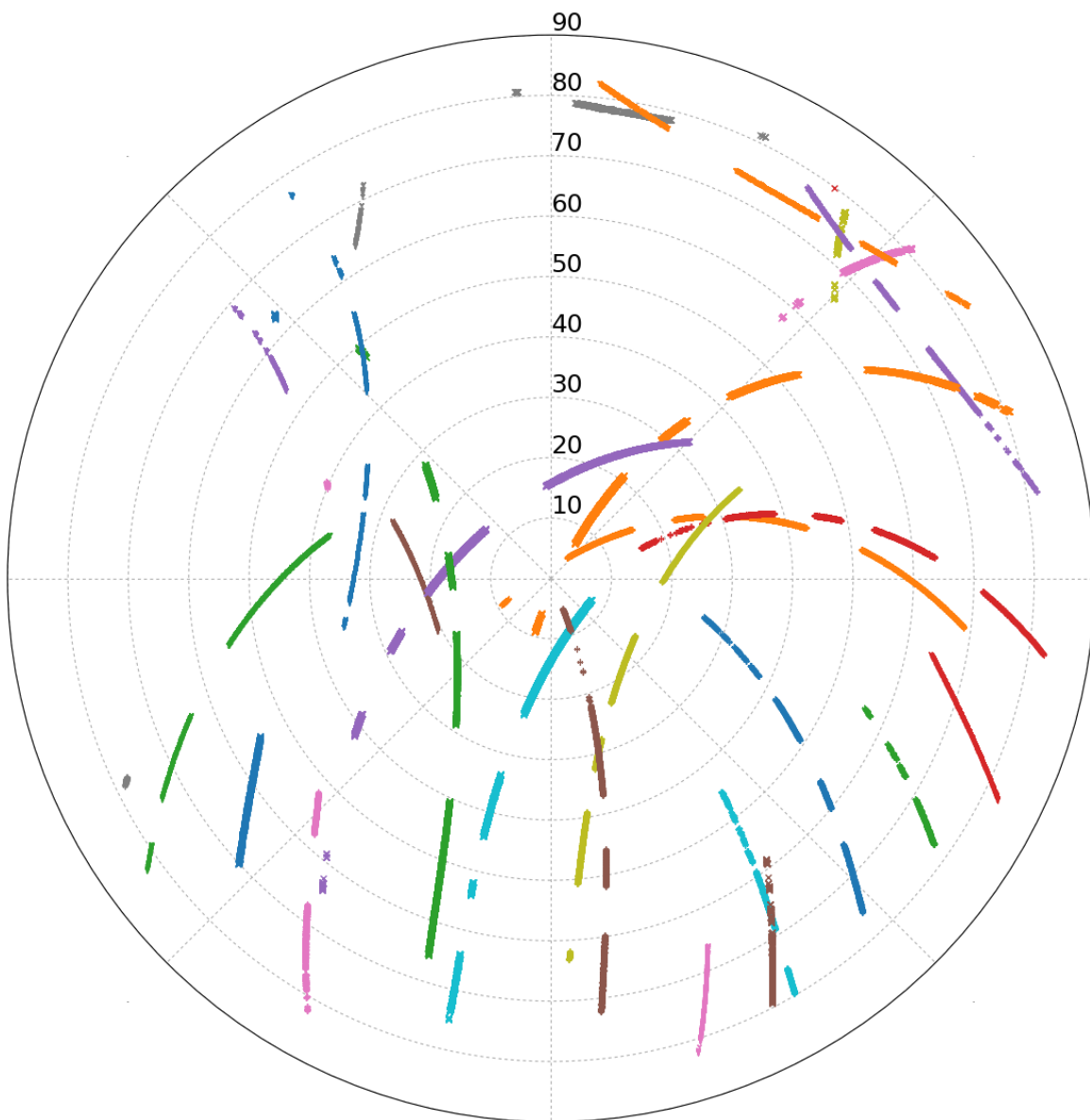
UTM (North) Zone 30

5559768.511 m (N)
348366.030 m (E)

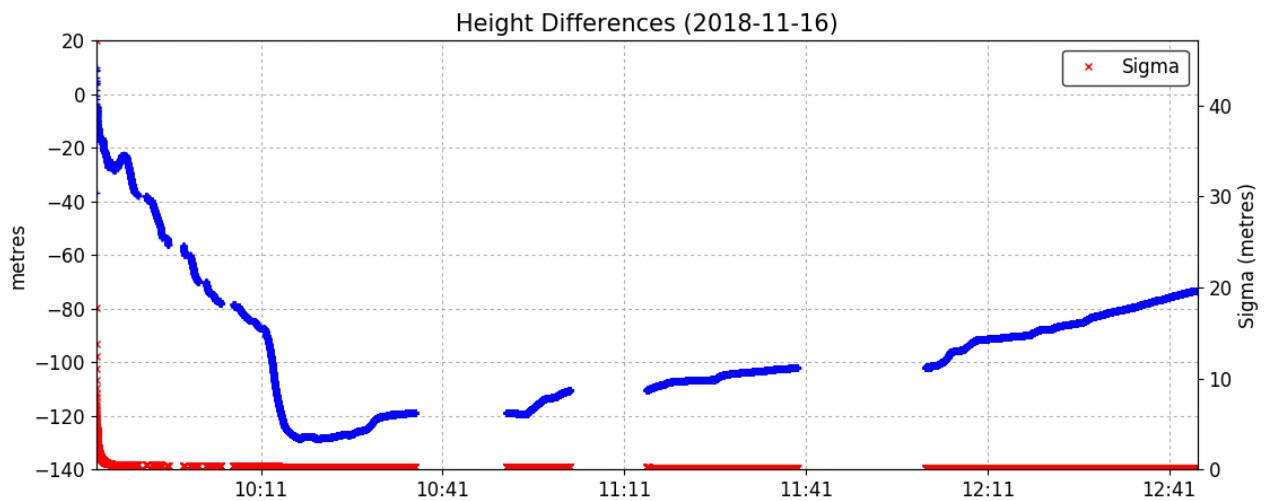
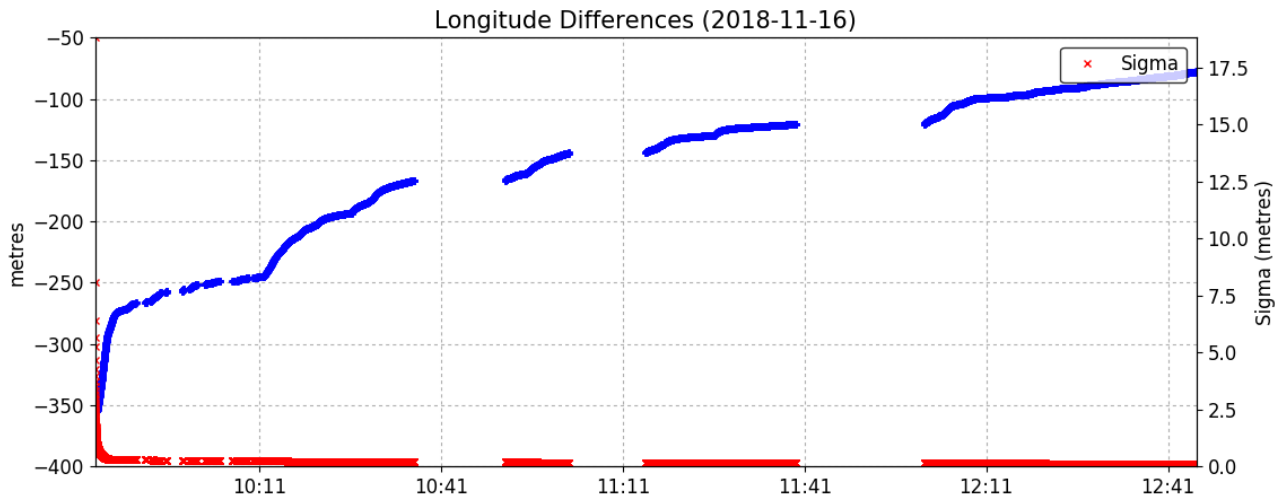
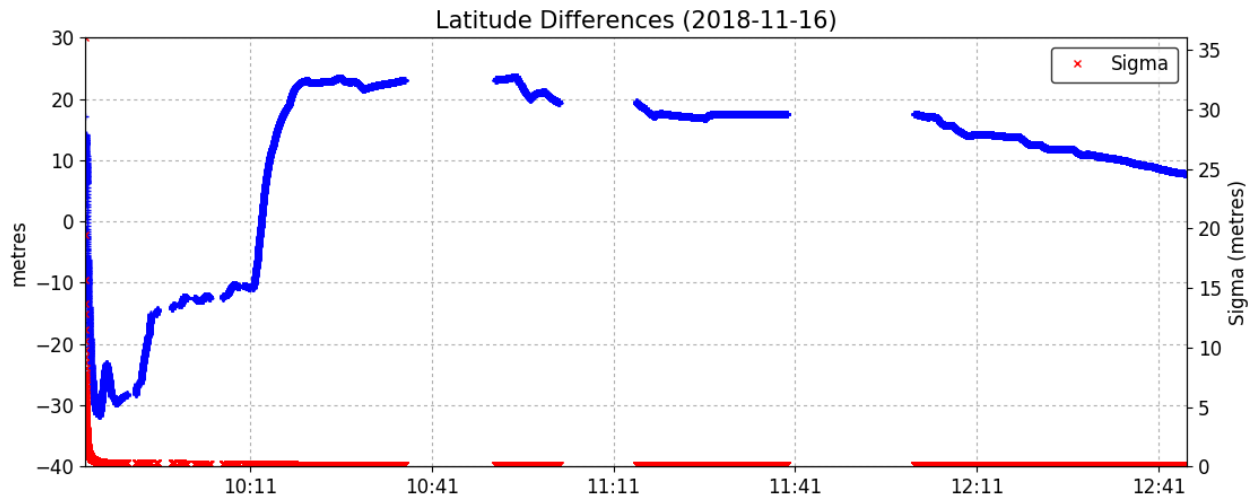
Scale Factors
0.999882 (point)
0.999861 (combined)

*(Coordinates from RINEX header used as a priori position)

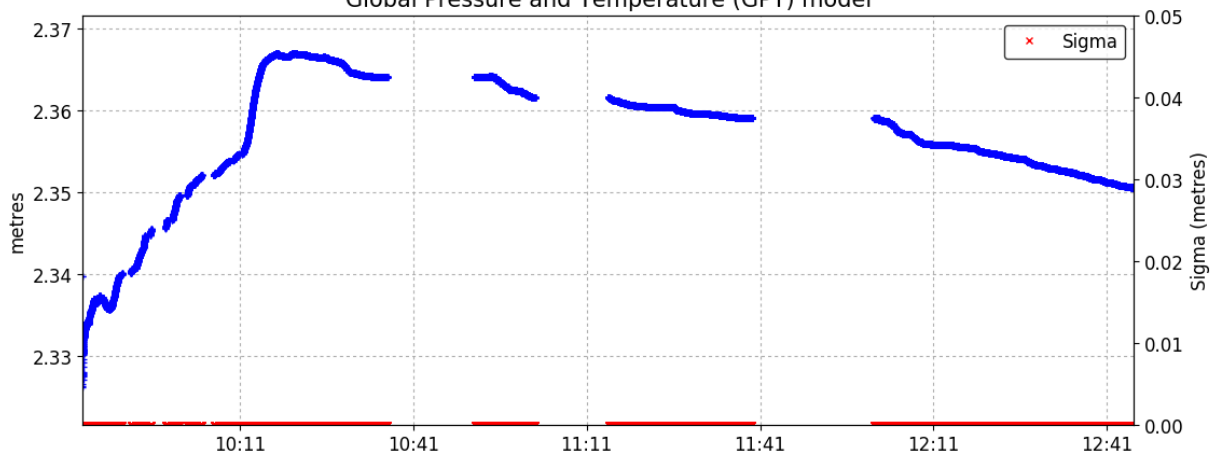
Satellite Sky Distribution
 Note: The sampling interval of this plot is 4.0 sec



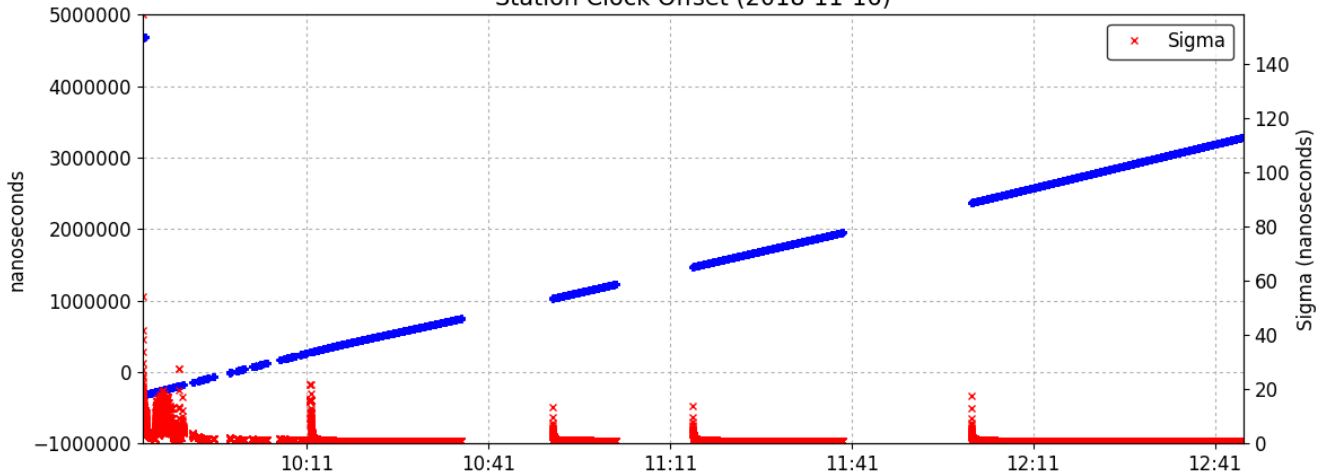
+	G01	×	G09	×	G19	×	G32	×	R10	×	R18
+	G02	+	G11	+	G22	×	R01	+	R11	+	R19
+	G03	×	G14	+	G23	+	R02	+	R13	+	R20
+	G06	+	G17	+	G28	×	R03	+	R17	×	R24
+	G07	+	G18	+	G31	+	R04				



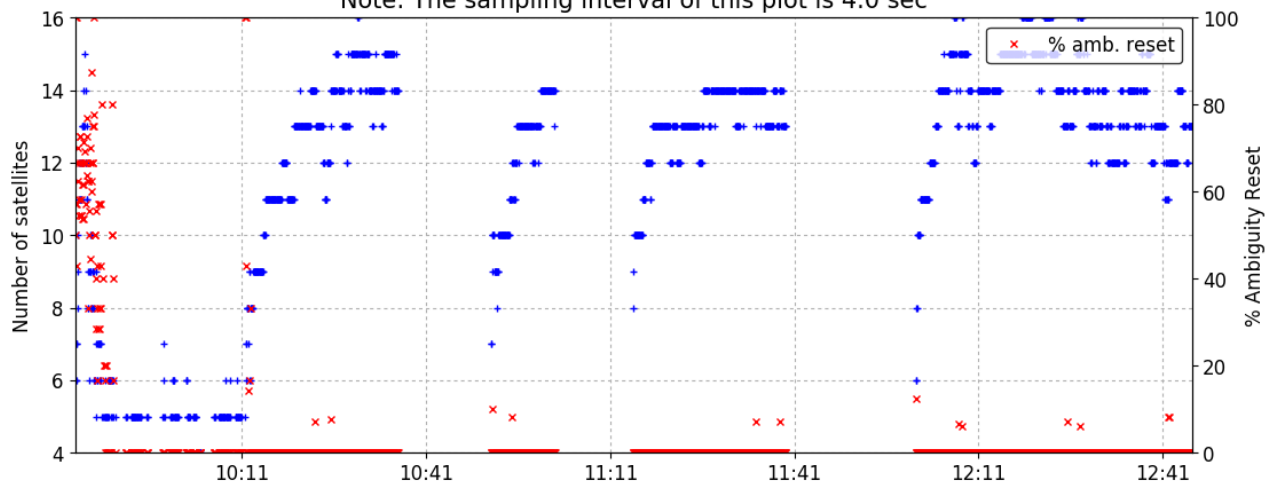
Modelled Tropospheric Zenith Delay (2018-11-16)
Global Pressure and Temperature (GPT) model



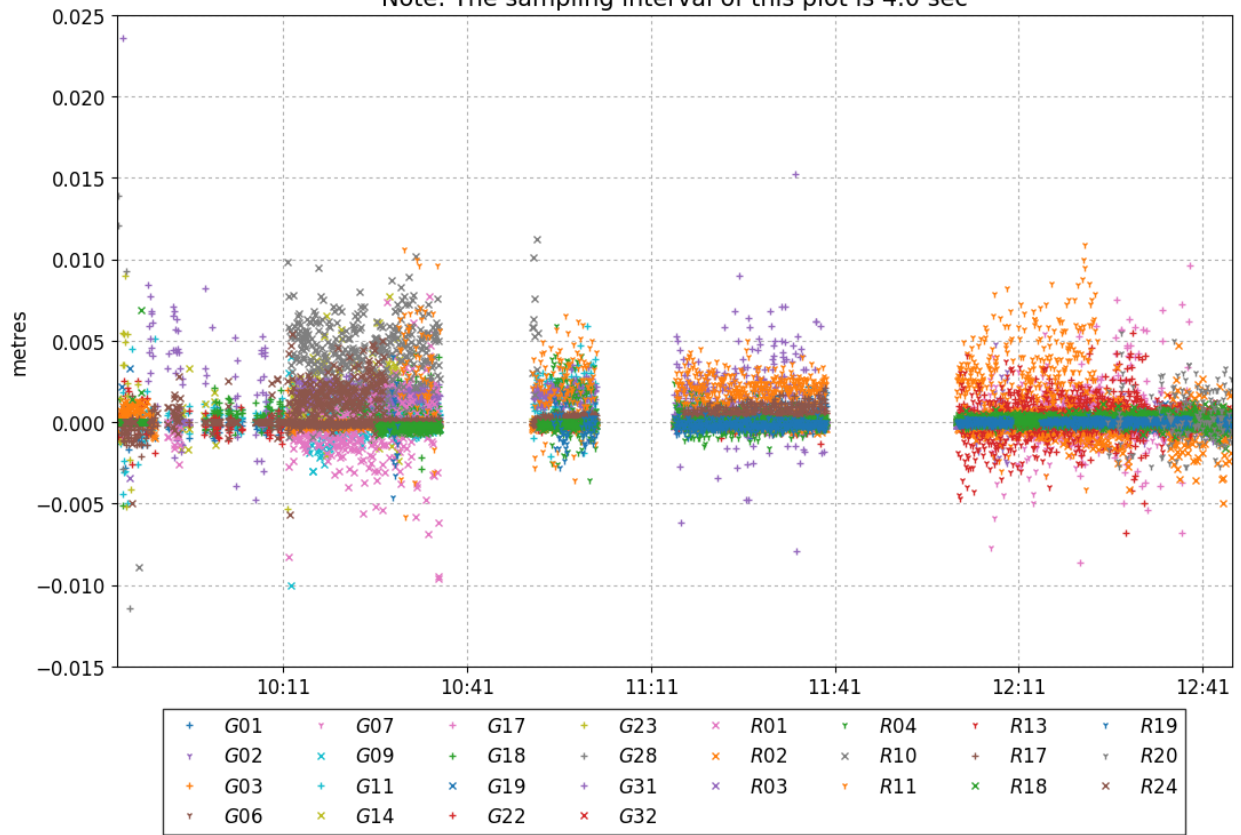
Station Clock Offset (2018-11-16)



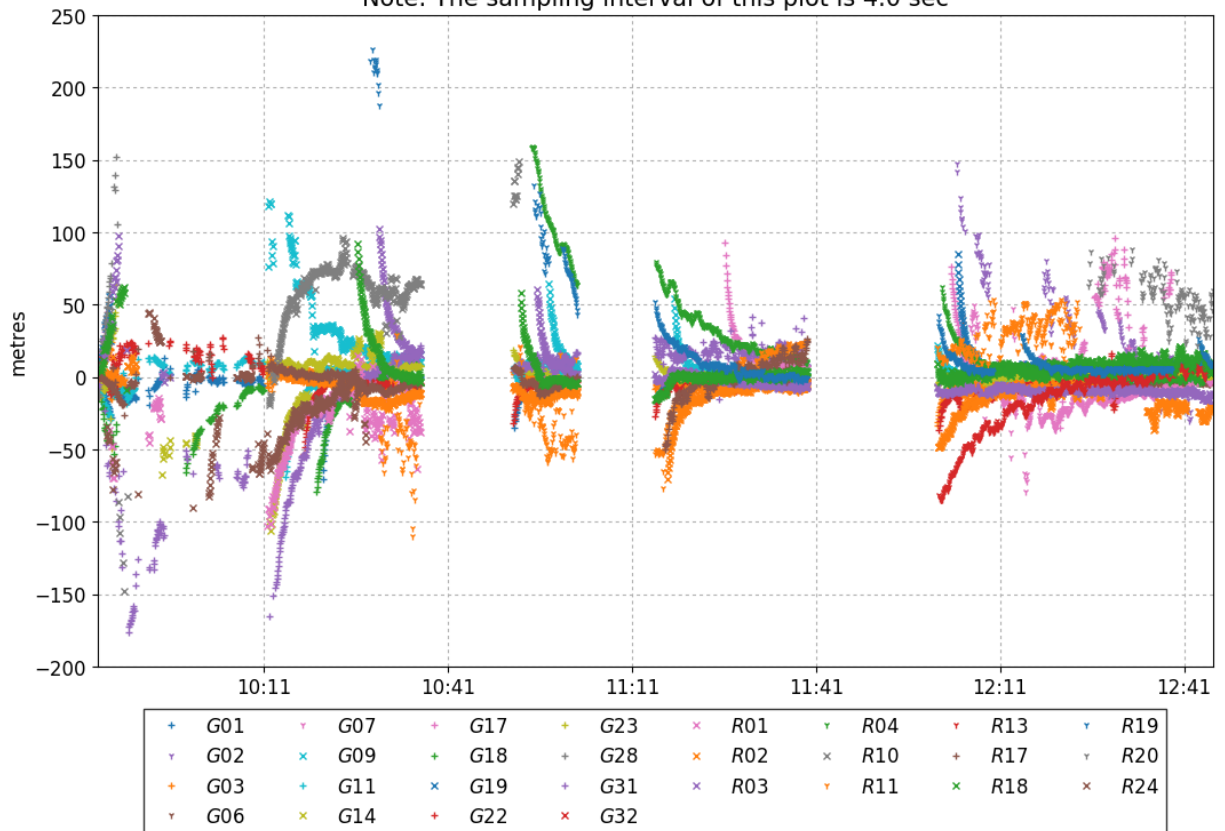
Tracked Satellites and Reset Ambiguities (2018-11-16)
Note: The sampling interval of this plot is 4.0 sec



Carrier-Phase Residuals (2018-11-16)
 Note: The sampling interval of this plot is 4.0 sec



Pseudo-Range Residuals (2018-11-16)
 Note: The sampling interval of this plot is 4.0 sec



~~~ Disclaimer ~~~

Natural Resources Canada does not assume any liability deemed to have been caused directly or indirectly by any content of its CSRS-PPP online positioning service.

If you have any questions, please feel free to contact:

**Canadian Geodetic Survey
Surveyor General Branch
Natural Resources Canada
Government of Canada
588 Booth Street, Room 334
Ottawa, Ontario K1A 0Y7
Phone: 343-292-6617**

Email: nrcan.geodeticinformationservices.nrcan@canada.ca



**Natural Resources
Canada**

**Ressources naturelles
Canada**

Canada